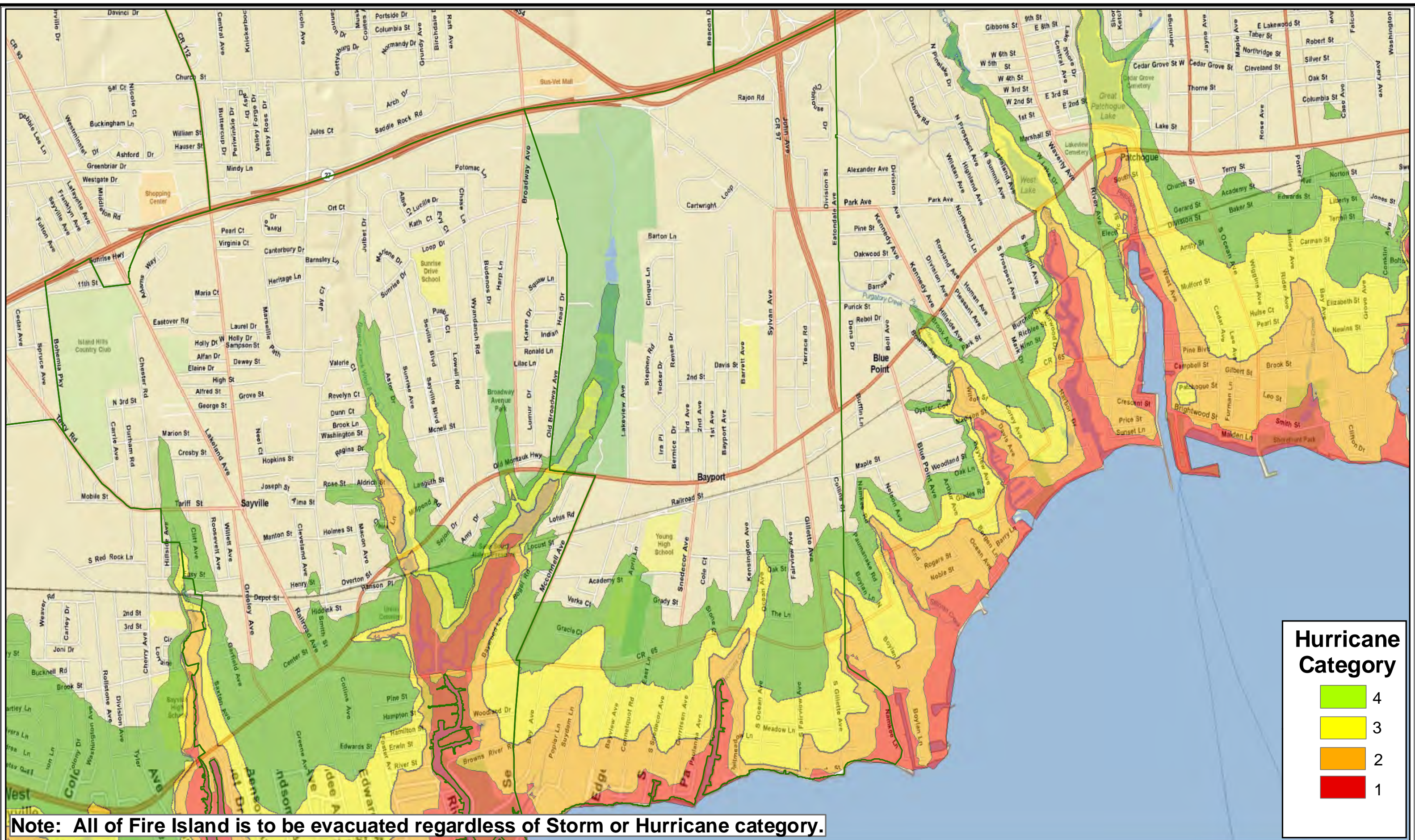
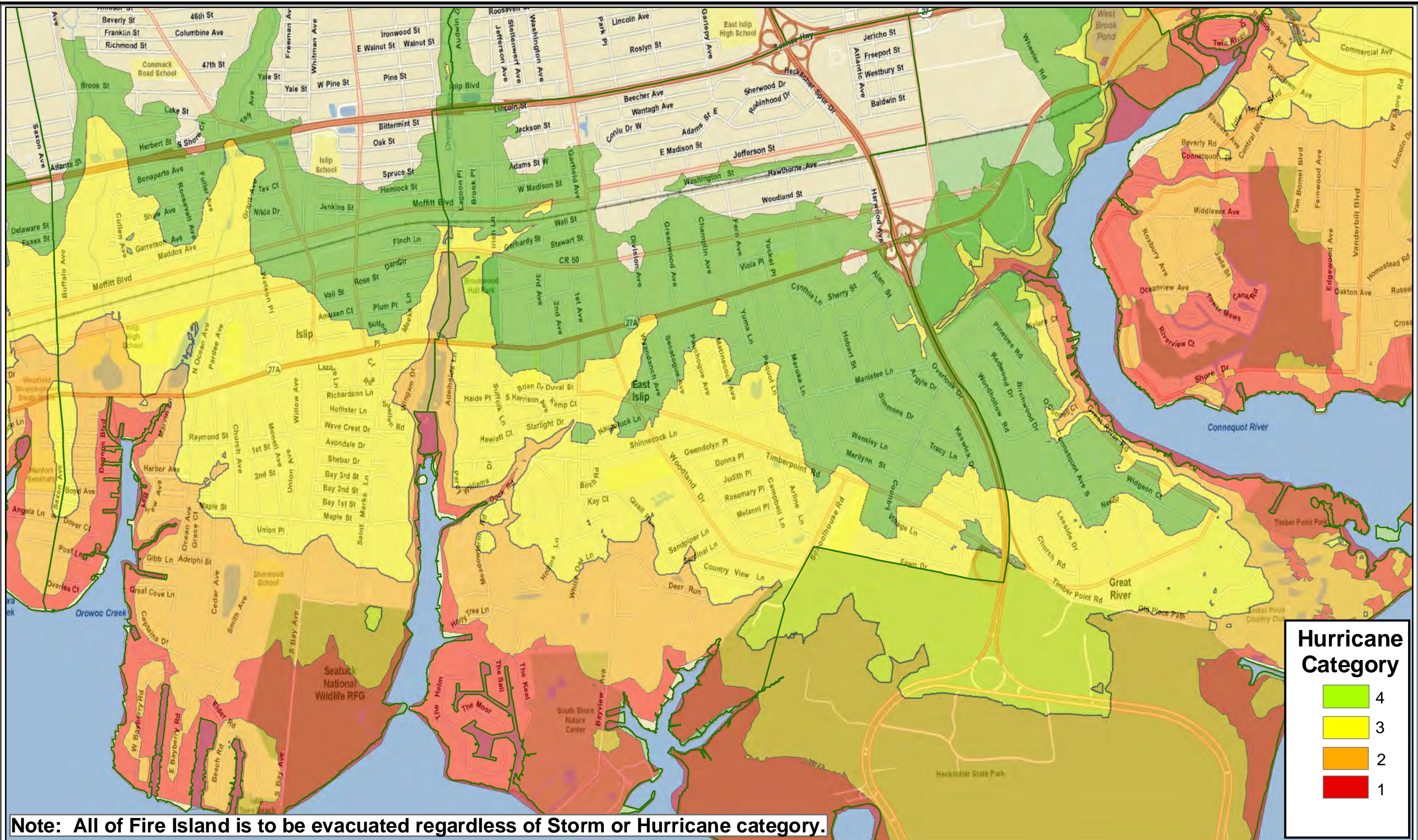


Hurricane Category

Green	4
Yellow	3
Orange	2
Red	1





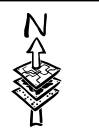
Town of Islip Storm/Hurricane Evacuation Priorities - East Islip
Categories 1 through 4

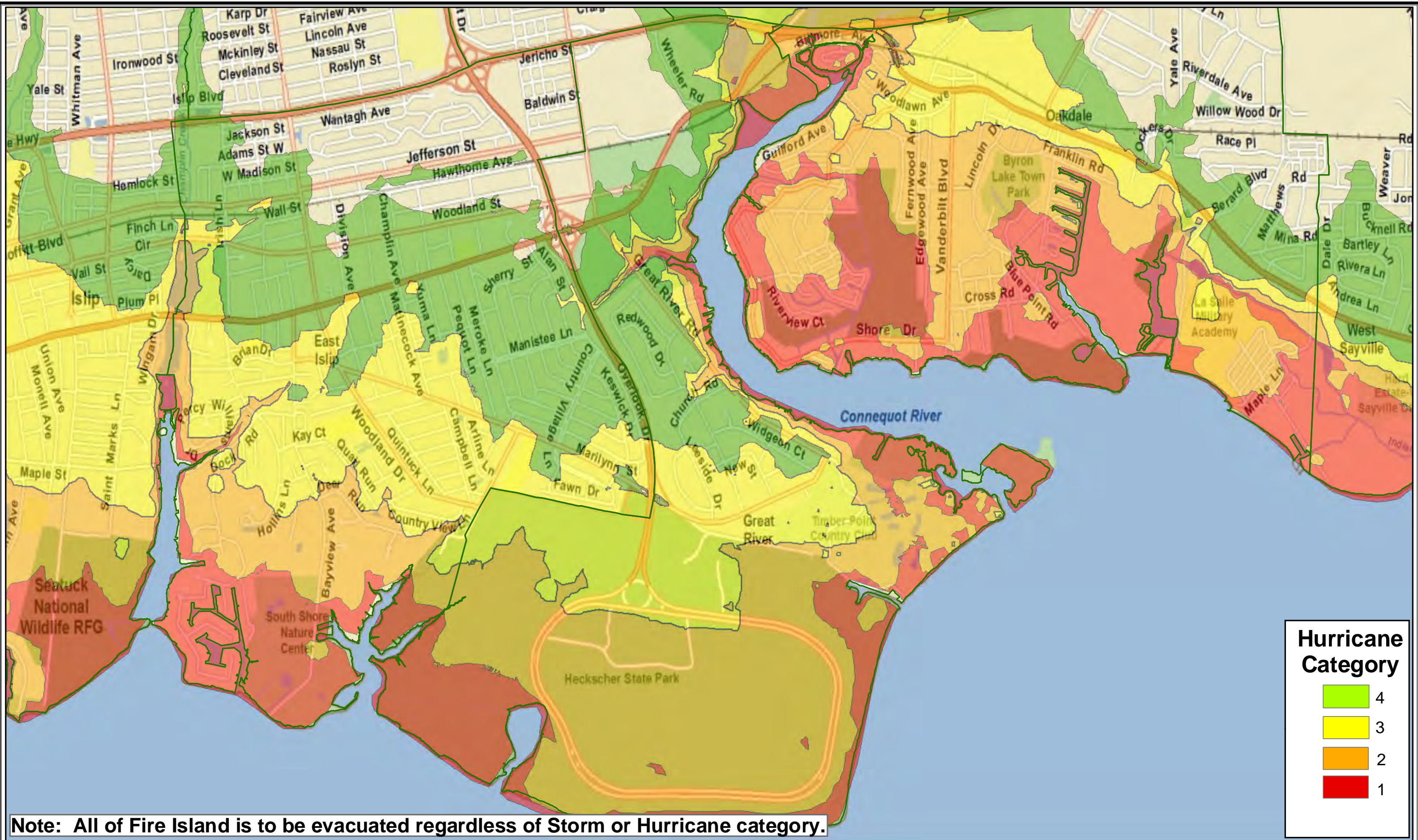
Source: NYS Office of Emergency Management - GIS Clearinghouse

Town of Islip
Geographic Information System

Drawn By: DCG

Date: 01/03/2007





Town of Islip Storm/Hurricane Evacuation Priorities - Great River Categories 1 through 4

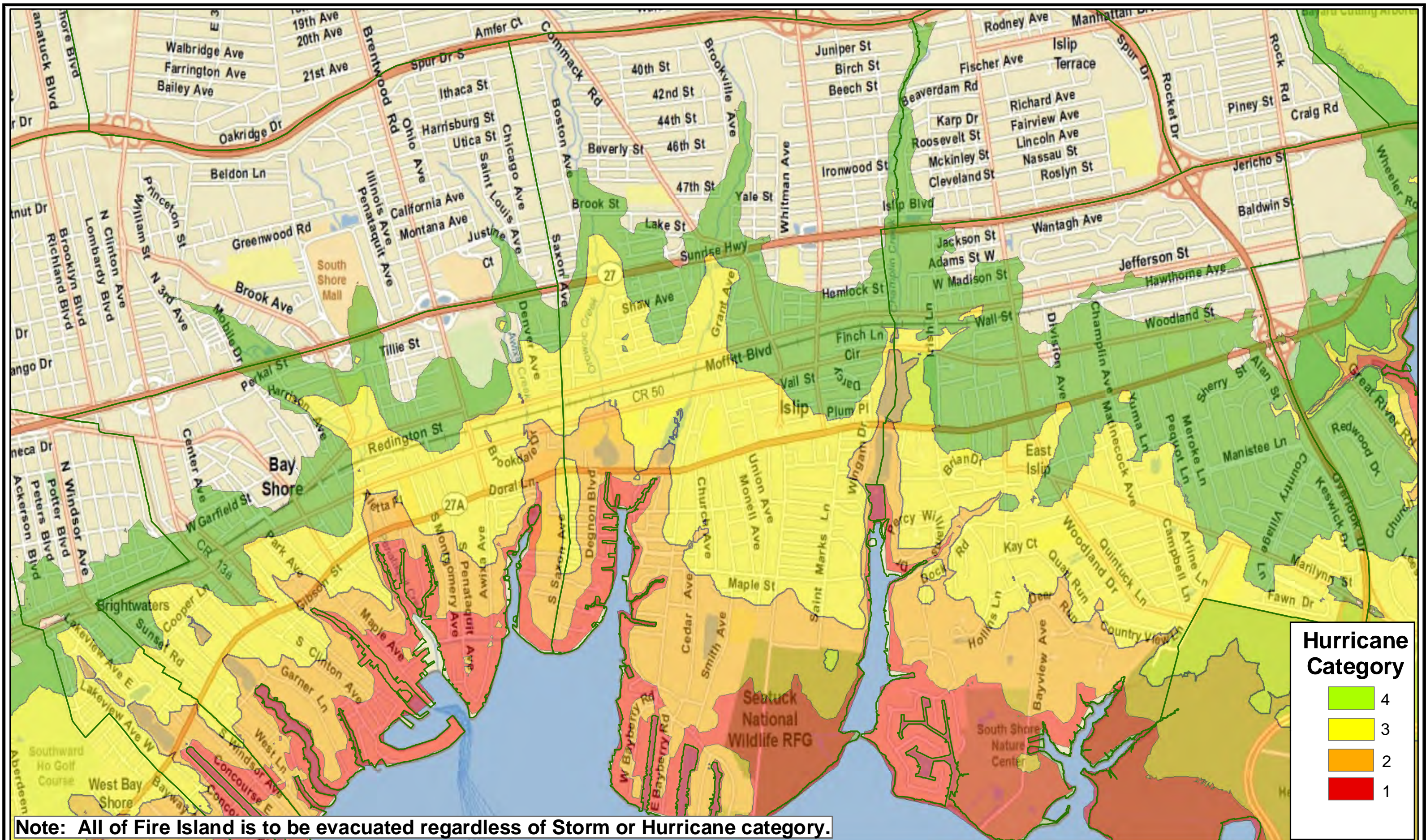
Source: NYS Office of Emergency Management - GIS Clearinghouse

Town of Islip
Geographic Information System

Drawn By: DCG

Date: 01/03/2007





Town of Islip Storm/Hurricane Evacuation Priorities - Islip Categories 1 through 4

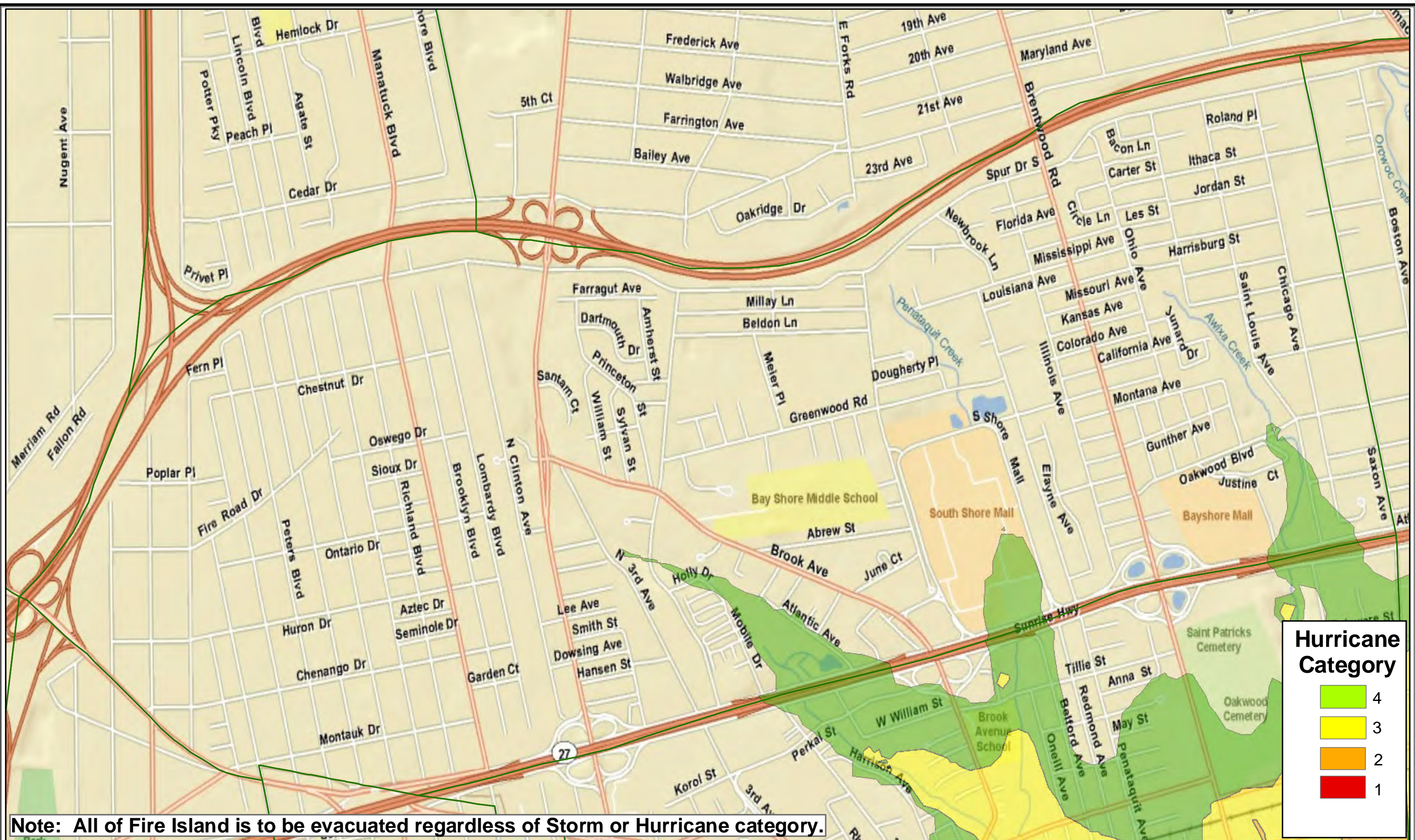
Source: NYS Office of Emergency Management - GIS Clearinghouse

Town of Islip
Geographic Information System

Drawn By: DCG

Date: 01/03/2007





Hurricane Category

	4
	3
	2
	1



Town of Islip Storm/Hurricane Evacuation Priorities - North Great River

Categories 1 through 4

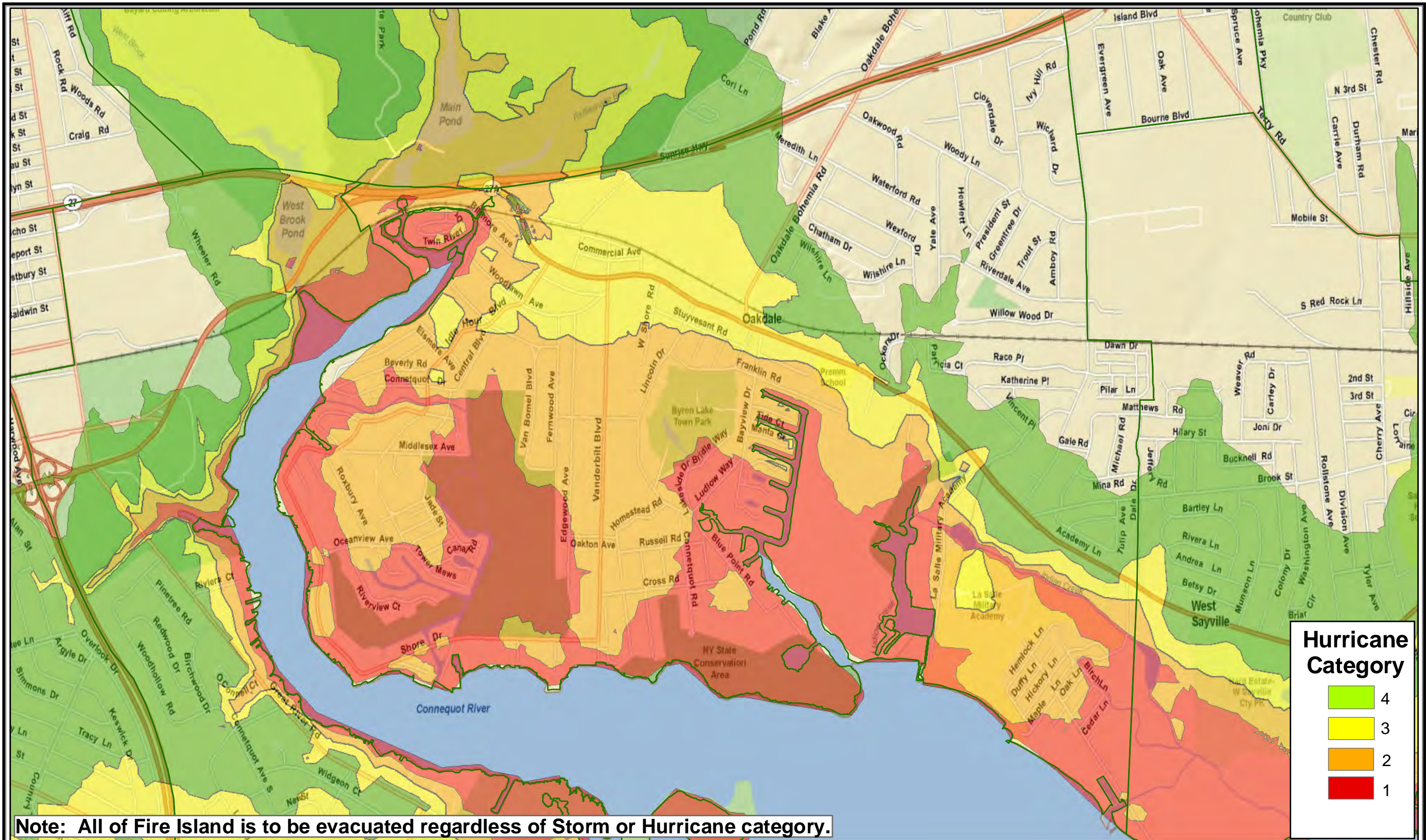
Town of Islip
Geographic Information System

Drawn By: DCG

Date: 01/03/2007



Source: NYS Office of Emergency Management - GIS Clearinghouse



Note: All of Fire Island is to be evacuated regardless of Storm or Hurricane category.



Town of Islip Storm/Hurricane Evacuation Priorities - Oakdale Categories 1 through 4

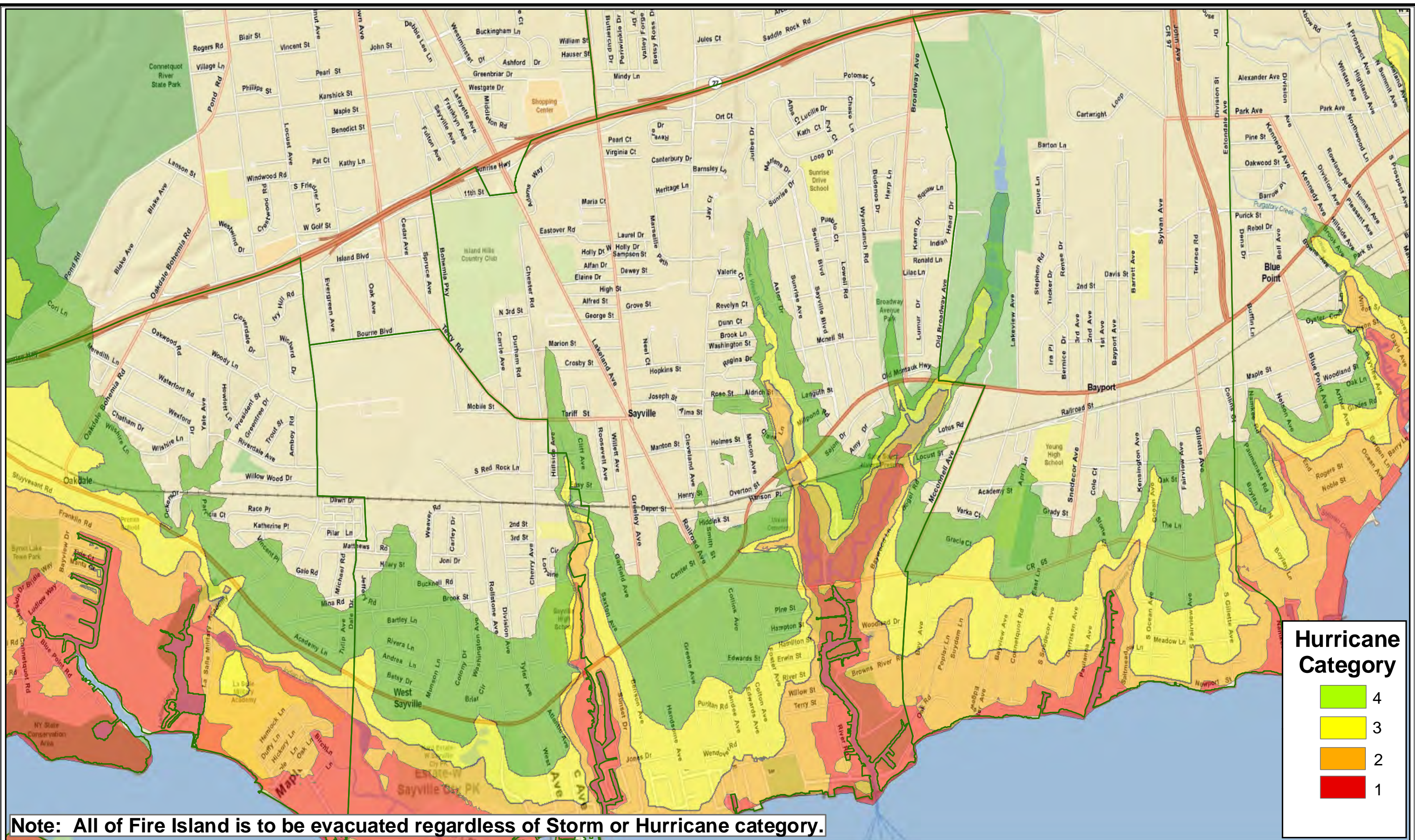
Source: NYS Office of Emergency Management - GIS Clearinghouse

Town of Islip
Geographic Information System

Drawn By: DCG

Date: 01/03/2007





Note: All of Fire Island is to be evacuated regardless of Storm or Hurricane category.



Town of Islip Storm/Hurricane Evacuation Priorities - Sayville

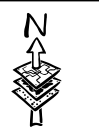
Categories 1 through 4

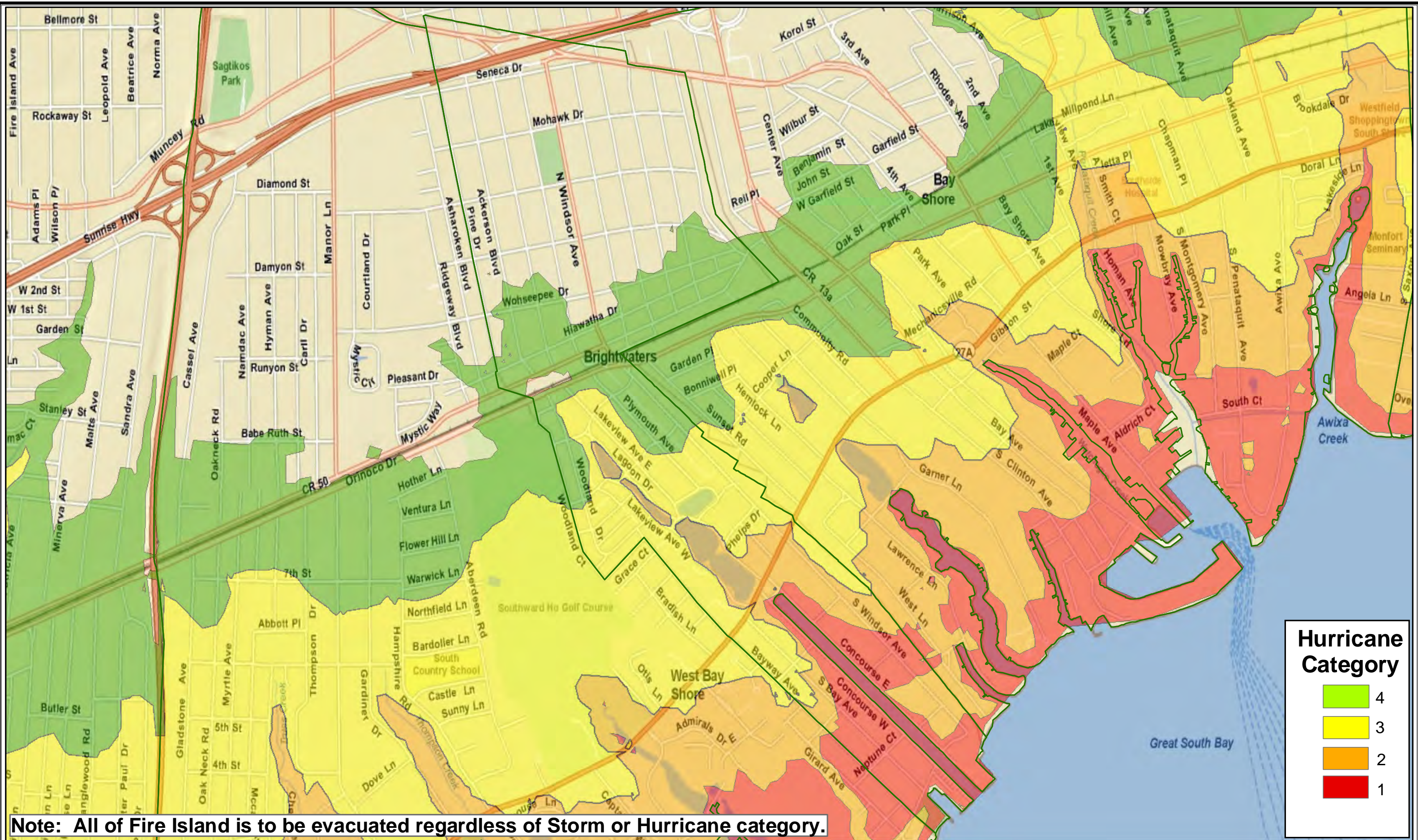
Source: NYS Office of Emergency Management - GIS Clearinghouse

Town of Islip
Geographic Information System

Drawn By: DCG

Date: 01/03/2007





Town of Islip Storm/Hurricane Evacuation Priorities - Village of Brightwaters

Categories 1 through 4

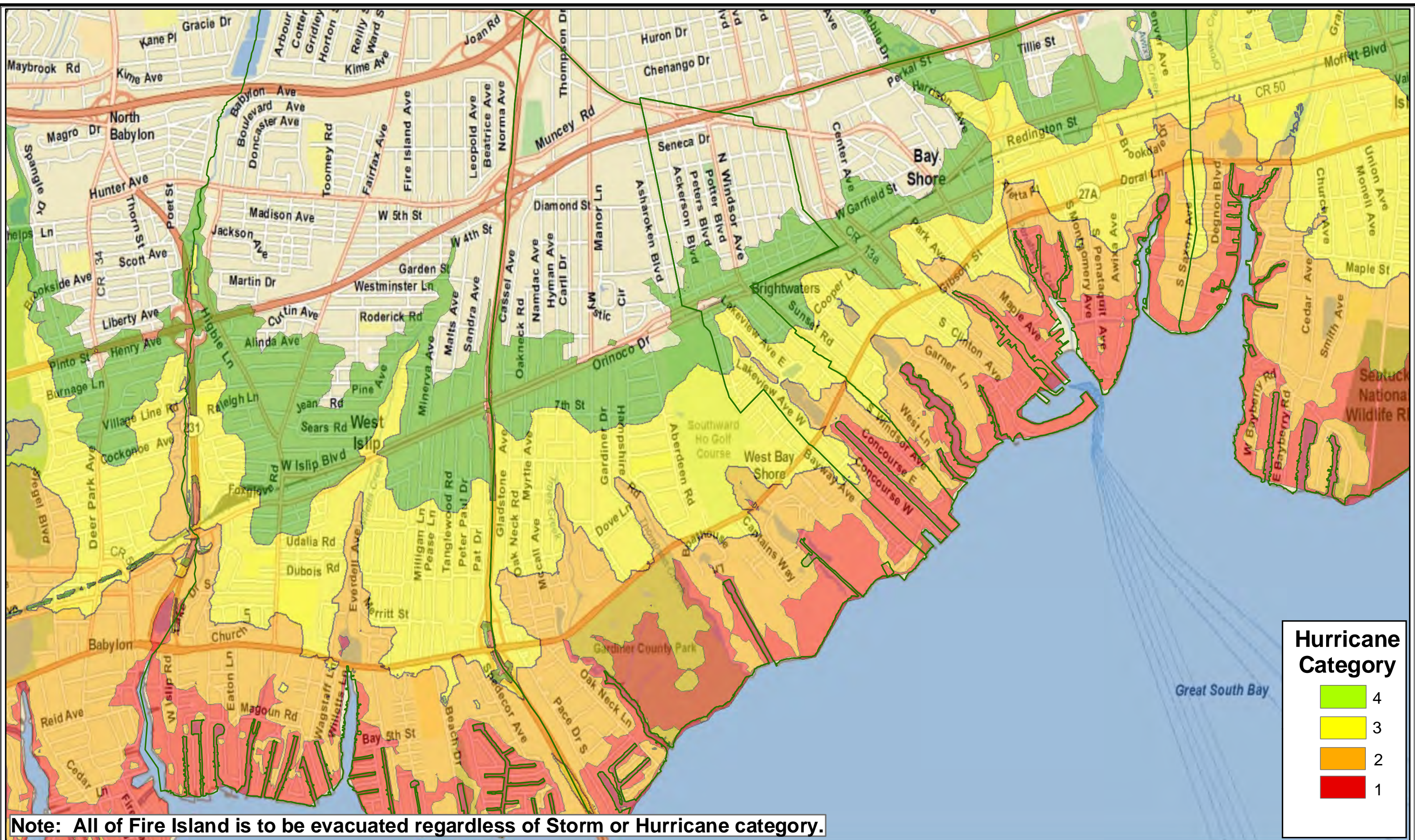
Source: NYS Office of Emergency Management - GIS Clearinghouse

Town of Islip
Geographic Information System

Drawn By: DCG

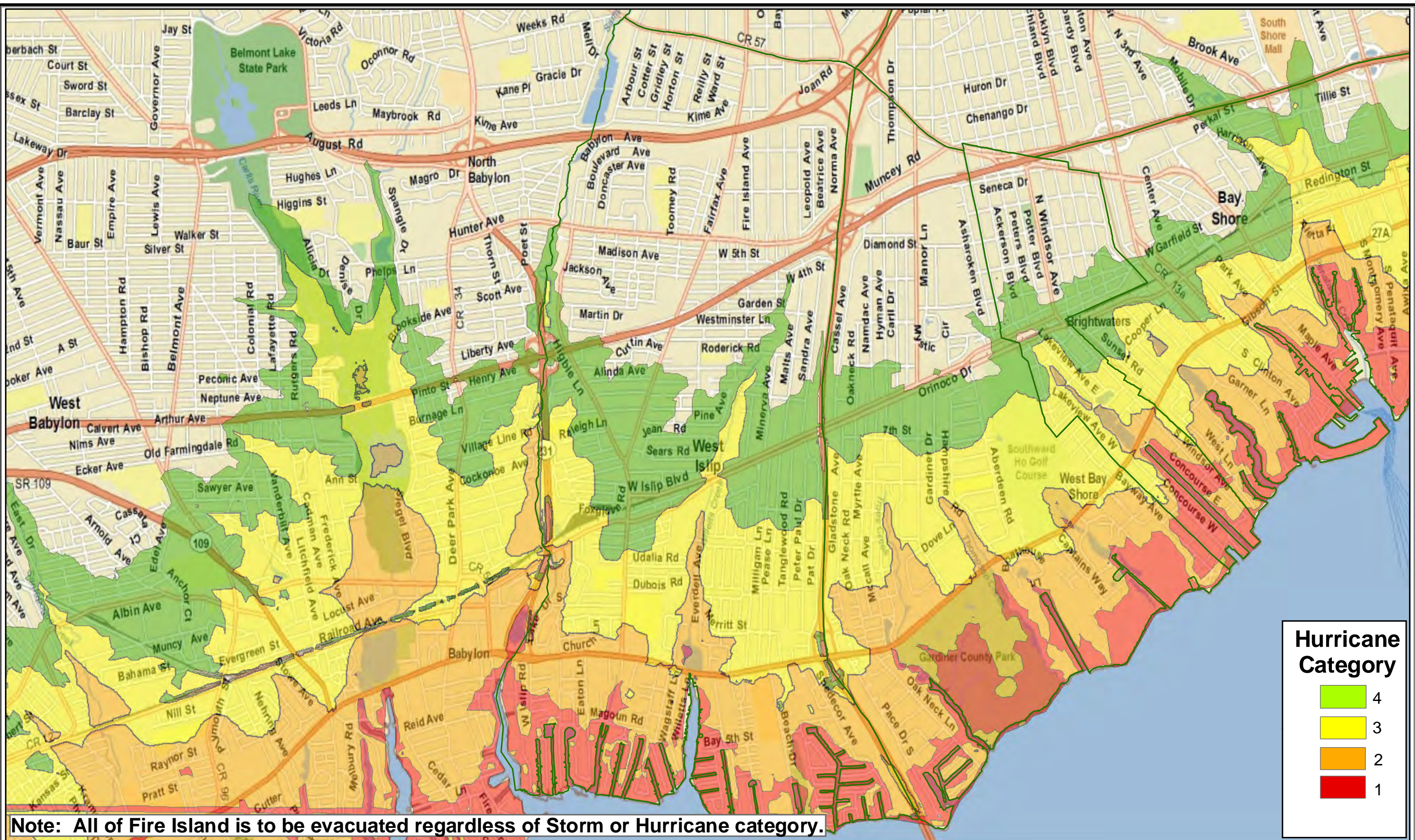
Date: 01/03/2007





Hurricane Category

Light Green	4
Yellow	3
Orange	2
Red	1



Town of Islip Storm/Hurricane Evacuation Priorities - West Islip Categories 1 through 4

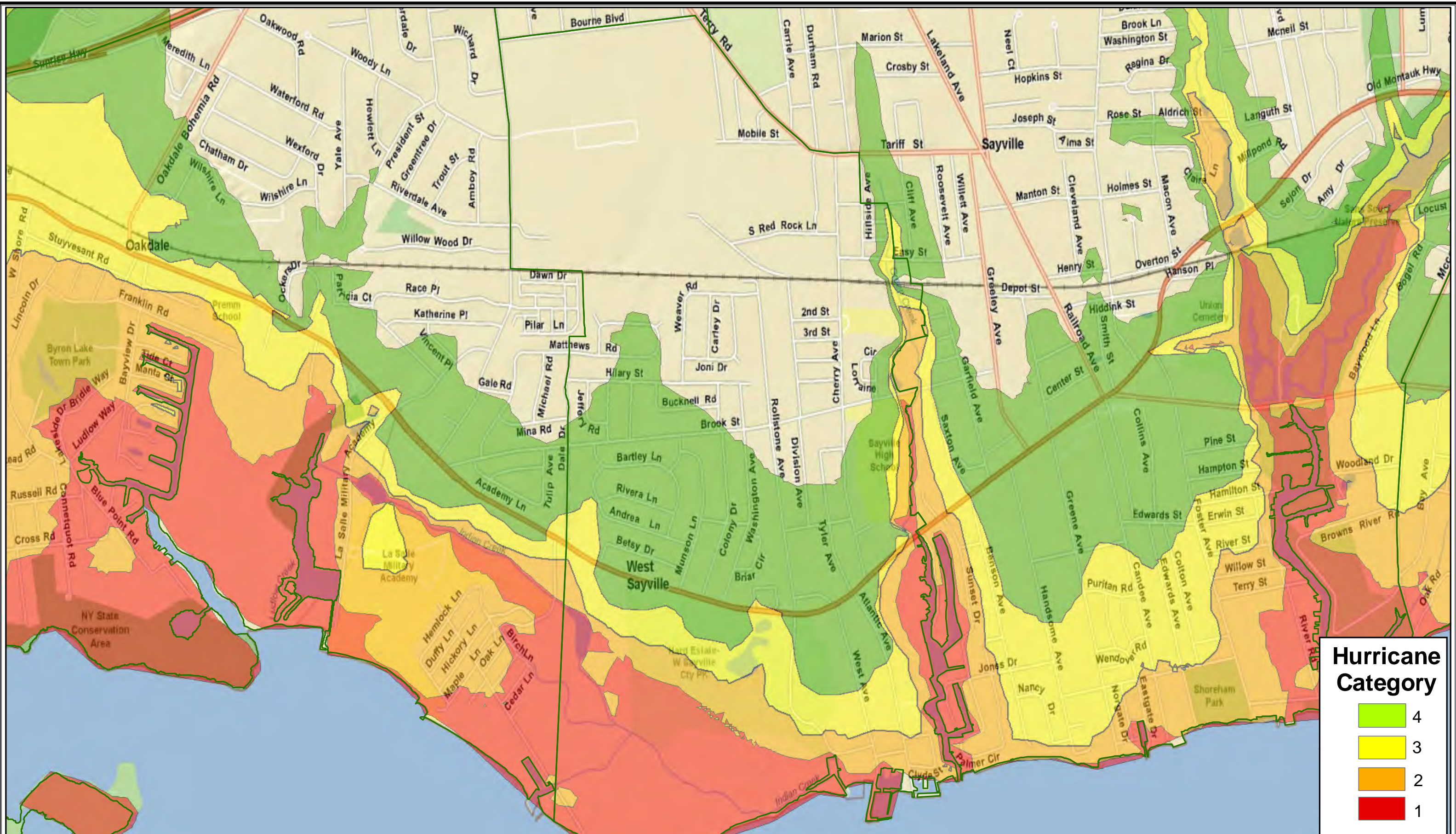
Source: NYS Office of Emergency Management - GIS Clearinghouse

Town of Islip
Geographic Information System

Drawn By: DCG

Date: 01/03/2007





Note: All of Fire Island is to be evacuated regardless of Storm or Hurricane category.



Town of Islip Storm/Hurricane Evacuation Priorities - West Sayville

Categories 1 through 4

Source: NYS Office of Emergency Management - GIS Clearinghouse

Town of Islip
Geographic Information System

Drawn By: DCG

Date: 01/03/2007

