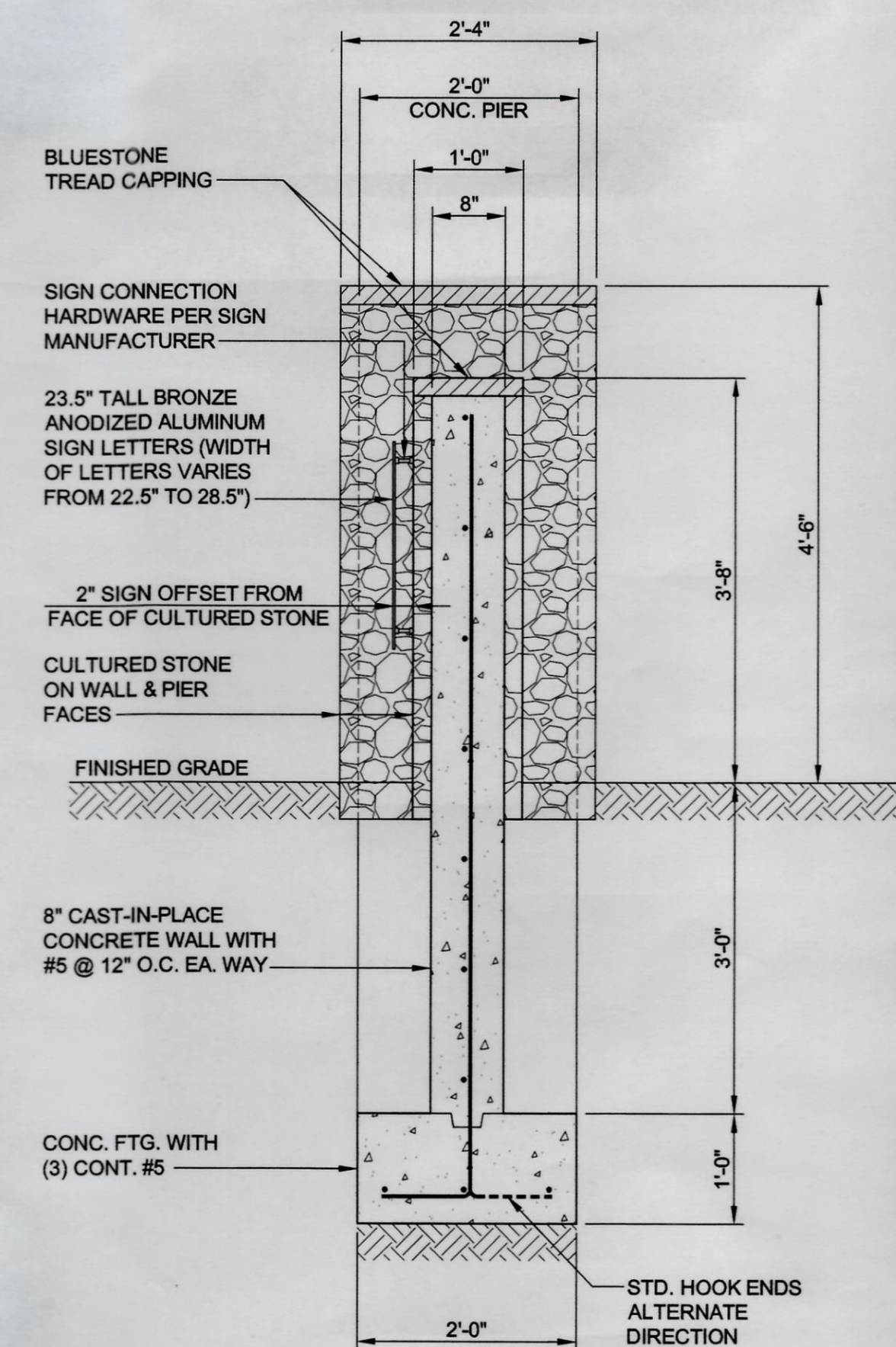
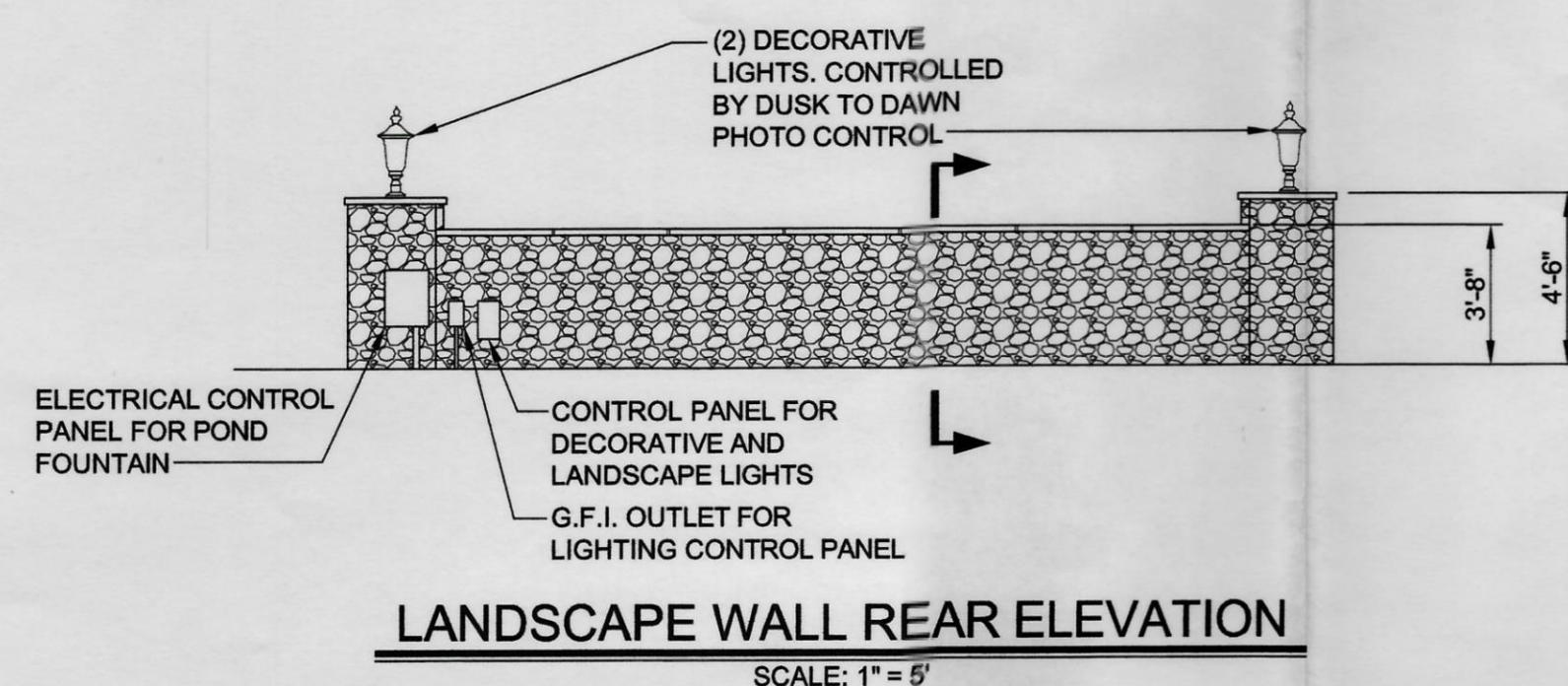
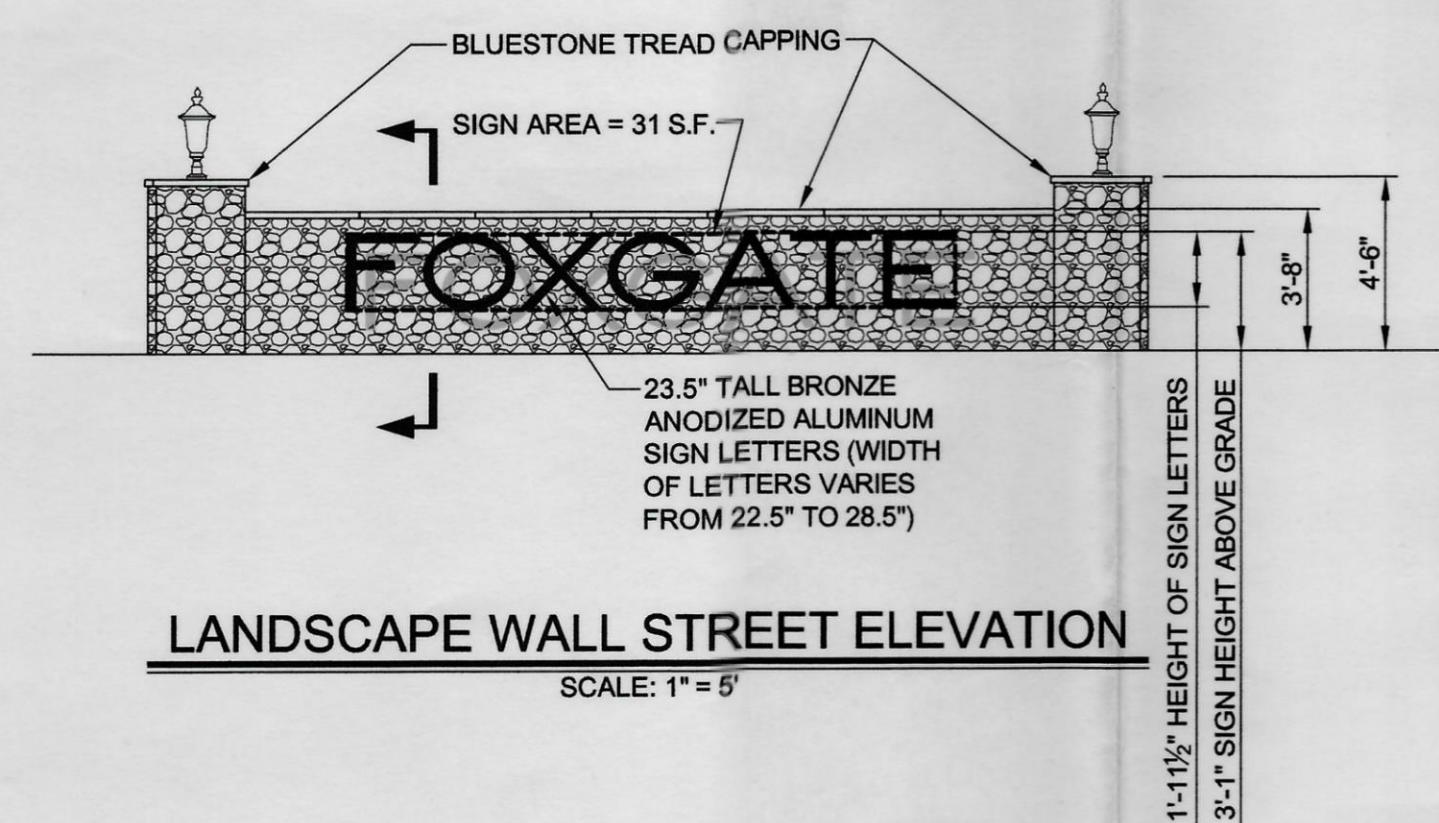
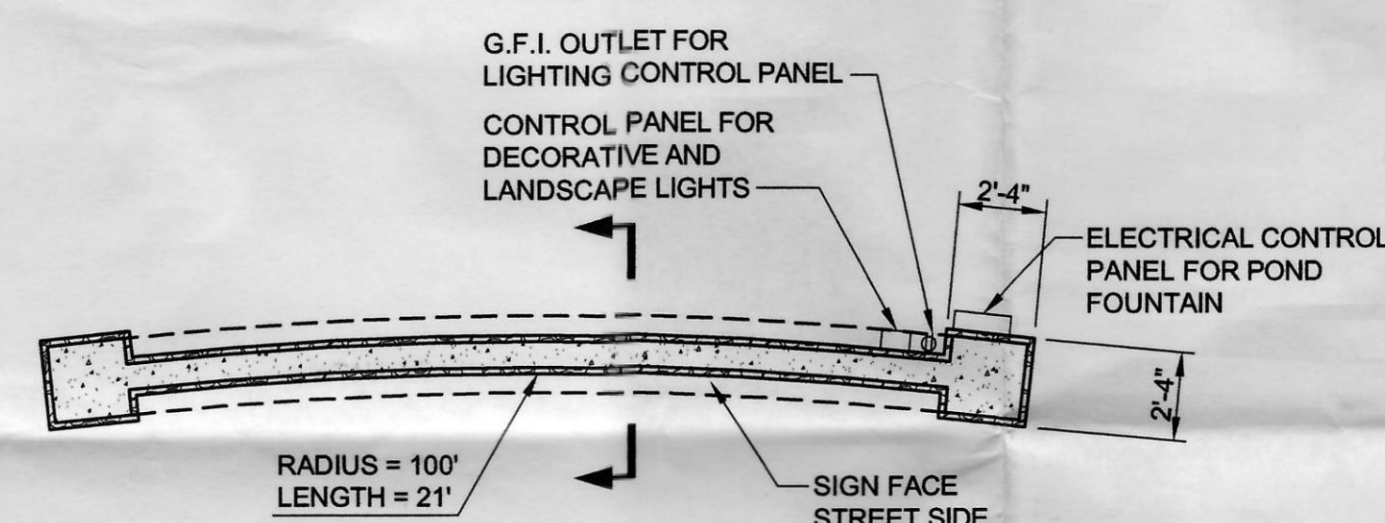


SIGN CRITERIA TABLE		
GROUND SIGN (PLACE)	ZONING DISTRICT PDD-MF	COMMENTS
ALLOWABLE (S.F.)	16	\$68-398 SCHEDULE OF SIGN REGULATIONS
BONUS AREA (S.F.)	3.20	\$68-399-A-(3) 20% BONUS AREA FOR SIGN INSTALLED IN LANDSCAPE PLANTER HAVING AN AREA FOUR TIMES THE AREA OF RESULTANT SIGN
BONUS AREA (S.F.)	0.80	\$68-399-A-(5) 5% BONUS AREA FOR SIGN MADE OF UNBREAKABLE MATERIAL
ALLOWABLE AREA (S.F.)	20	
PROVIDED AREA (S.F.)	31	
AREA IN EXCESS (S.F.)	11	55% RELIEF REQUESTED
ALLOWABLE HEIGHT (FEET)	8	
PROVIDED HEIGHT (FEET)	3.08	



The posted plan is subject to change. Please note that this site plan may be modified during the Town Planning Board and/or Town Board review process. Please contact the assigned planning department staff member if you have questions regarding the date and status of any posted graphics.

REV	DATE	AJZ	CK	DESCRIPTION
	5/13/22	AJZ	CK	ISSUED FOR TOWN OF ISLIP REVIEW
REVISIONS				
FOXGATE AT ISLIP				
APARTMENT DEVELOPMENT CENTRAL ISLIP				
NEW YORK				
TOI SITE PLAN #: SP2022 - 005				
SCTM# 0500-142.00-13.00-001.001				
JRH Consulting Engineers, DPC				
The Third Generation of Excellence In Water Supply, Water Resources, Civil and Environmental Engineering				
3555 Veterans Memorial Highway, Suite A, Ronkonkoma, NY 11779				
PHONE: (631) 234-2220 FAX: (631) 234-2221 E-MAIL: info@holzmacher.com				
SHEET TITLE: GROUND SIGN PLANS & DETAILS				
DESIGNED BY:	PDC	SCALE:	AS NOTED	C-1
REVIEWED BY:	AJZ	DATE:	May 13, 2022	
PLAN SHEET BY:	PDC	PROJECT NO:	MRECJ15-01	

