

APPENDIX I

NOISE IMPACT-RELATED DOCUMENTS

Appendix I-1
Noise Survey Data Sheets

NOISE SURVEY DATA SHEET

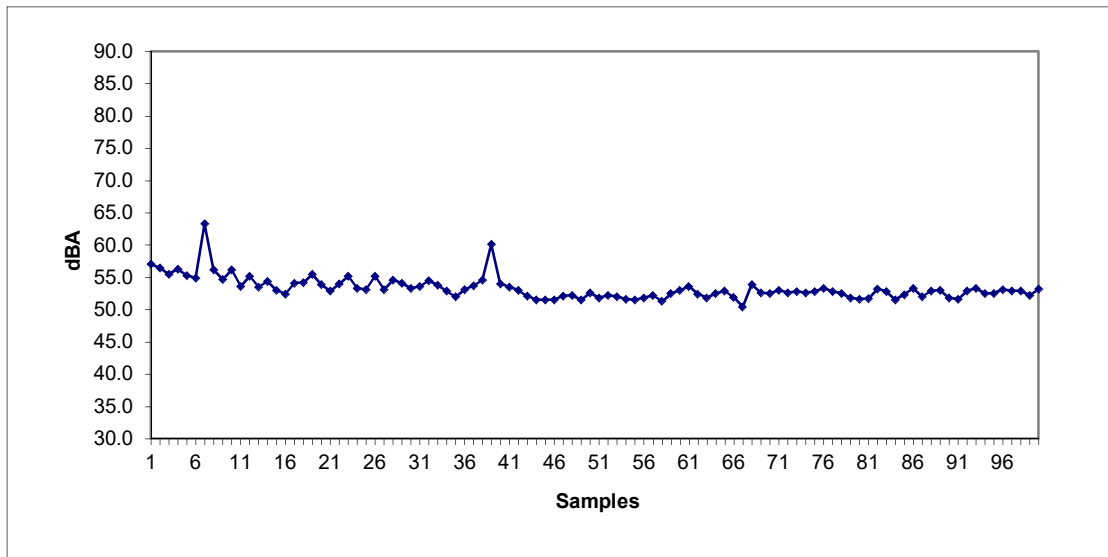
STATION 1

Date: 6/29/18
Time: 8:15 AM
Interval: 10 seconds
Location: 100' E. of Chester Road, s/o of existing bldg
Weather: 74F, clear
Description: Along property line

Field Notes:
 South Village Drive has an intermittent flow of traffic.
 Measurements during cars passing in range of 50 - 59
 noticeable change when no cars passing (values between
 50.4 and 53.6)

1	57.0	c:	18	54.2		35	52.0		51	51.8		68	53.9		85	52.3	
2	56.5		19	55.5		36	53.1		52	52.2		69	52.6		86	53.3	
3	55.5		20	53.9		37	53.7		53	52.0		70	52.5		87	52.0	
4	56.3		21	52.9		38	54.6		54	51.6		71	53.0		88	52.9	
5	55.3		22	54.0		39	60.1		55	51.5		72	52.6		89	53.0	
6	54.9		23	55.2		40	54.0		56	51.8		73	52.8		90	51.8	
7	63.3	c:	24	53.3		41	53.5		57	52.2		74	52.6		91	51.6	
8	56.2		25	53.1		42	53.0		58	51.3		75	52.8		92	52.9	
9	54.7		26	55.2		43	52.1		59	52.5		76	53.3		93	53.3	
10	56.2		27	53.1		44	51.5		60	53.0		77	52.8		94	52.5	
11	53.6		28	54.6		45	51.5		61	53.6		78	52.5		95	52.5	
12	55.2		29	54.1		46	51.5		62	52.4		79	51.8		96	53.1	
13	53.5		30	53.3		47	52.1		63	51.8		80	51.6		97	52.9	
14	54.4		31	53.6		48	52.2		64	52.5		81	51.7		98	52.9	
15	53.0		32	54.5		49	51.5		65	52.9		82	53.2		99	52.2	
16	52.4		33	53.8		50	52.6		66	51.9		83	52.8		100	53.2	
17	54.1		34	52.9					67	50.4		84	51.5		Leq:	53.9	

a: aircraft c: car(s) tk: truck d: dog nc: no cars mc: motorcycle
 b: bus



Maximum Value: 63.3
 Minimum Value: 50.4

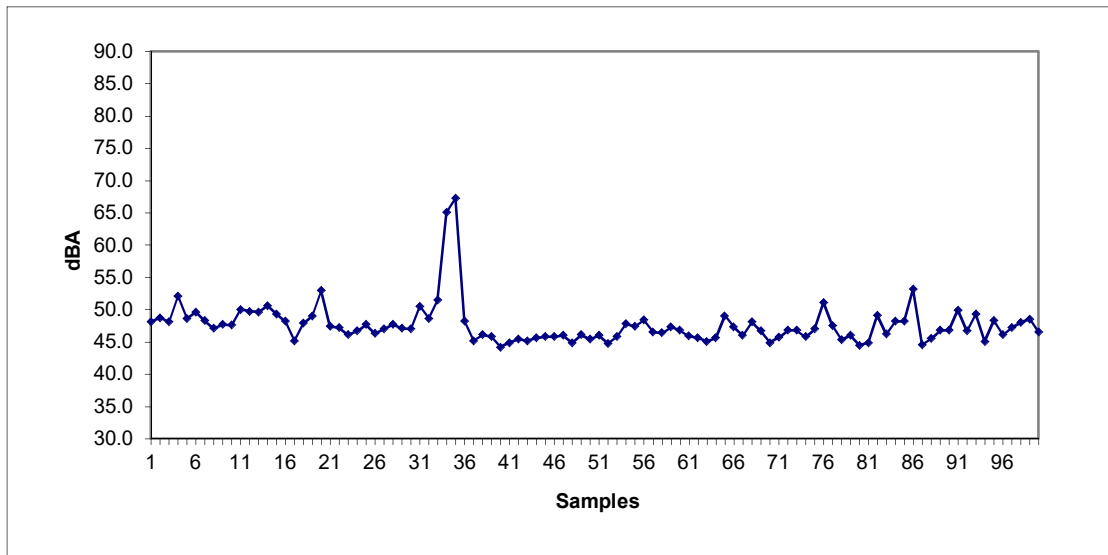
NOISE SURVEY DATA SHEET

STATION 2

Date:	6/29/18	Field Notes:	Occasional passing car on Chester Road
Time:	8:41 AM		Ambient bird calls
Interval:	10 seconds		
Location:	100' E. of Chester Rd along residential fence line		
Weather:	75F clear skies		
Description:	Along proposed property line		

1	48.1		18	47.9		35	67.3	tk	51	46.0		68	48.1		85	48.2	
2	48.7		19	49.0		36	48.2		52	44.8		69	46.7		86	53.2	br
3	48.1		20	53.0	c	37	45.2		53	45.8		70	44.9		87	44.6	
4	52.1		21	47.4		38	46.1		54	47.8	d	71	45.7		88	45.5	
5	48.6		22	47.2		39	45.8		55	47.4	d	72	46.8	br	89	46.8	
6	49.6		23	46.1		40	44.2		56	48.4	d	73	46.8	br	90	46.8	
7	48.3		24	46.7		41	44.9		57	46.5	d	74	45.8		91	49.9	
8	47.1		25	47.7		42	45.4		58	46.4	d	75	47.0	c	92	46.7	
9	47.7		26	46.3		43	45.2		59	47.3	d	76	51.1	c	93	49.3	c
10	47.6		27	47.0		44	45.6		60	46.8		77	47.5		94	45.1	
11	50.0	br:	28	47.7		45	45.8		61	45.9		78	45.3		95	48.3	c
12	49.7		29	47.1		46	45.8		62	45.6		79	46.0		96	46.1	
13	49.6		30	47.0		47	46.0		63	45.1		80	44.5		97	47.2	
14	50.6	br:	31	50.5	br	48	44.9		64	45.6		81	44.9		98	48.0	
15	49.3		32	48.6		49	46.1		65	49.0		82	49.1		99	48.5	
16	48.2		33	51.5	c	50	45.4		66	47.3		83	46.2		100	46.5	
17	45.2		34	65.1	tk:				67	46.0		84	48.2		Leq:	51.6	

a: aircraft c: car(s) tk: truck d: dog nc: no cars mc: motorcycle
 b: bus br: bird



Maximum Value: 67.3
 Minimum Value: 44.2

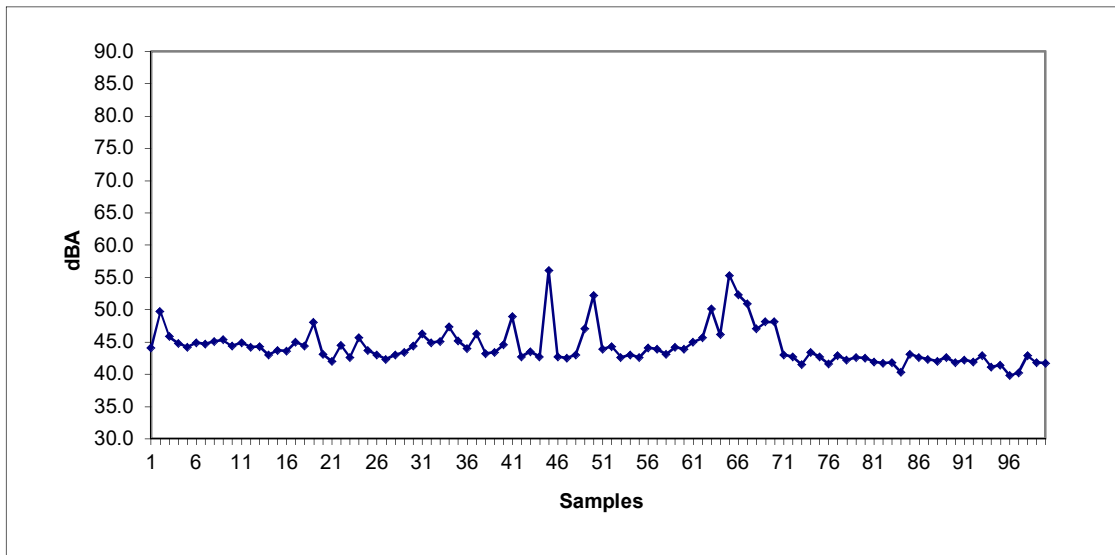
NOISE SURVEY DATA SHEET

STATION 3

Date:	6/29/18	Field Notes:	Occasional passing traffic at nearby intersection
Time:	9:20		Ambient bird calls
Interval:	10 seconds		
Location:	Dead end of Durham Rd, facing south		
Weather:	76F Clear		
Description:	In residential neighborhood, approx. 10' from property line and proposed sidewalk entrance		

1	44.1		18	44.4		35	45.2		51	43.9		68	47.0	c	85	43.1	
2	49.7	c	19	48.0	br	36	44.0		52	44.3		69	48.1	c	86	42.6	
3	45.8		20	43.1		37	46.2	br	53	42.6		70	48.1	c	87	42.3	
4	44.8		21	42.0		38	43.2		54	43.0		71	43.0		88	42.0	
5	44.2		22	44.5		39	43.4		55	42.6		72	42.7		89	42.6	
6	44.9		23	42.6		40	44.6		56	44.1		73	41.5		90	41.8	
7	44.7		24	45.6	br	41	48.9	br	57	43.9		74	43.4		91	42.2	
8	45.1		25	43.7		42	42.7		58	43.1		75	42.7		92	41.9	
9	45.3		26	43.0		43	43.5		59	44.2		76	41.6		93	42.9	
10	44.4		27	42.3		44	42.7		60	43.9		77	42.9		94	41.1	
11	44.9		28	43.0		45	56.1	br	61	45.0		78	42.2		95	41.4	
12	44.2		29	43.4		46	42.7		62	45.6		79	42.6		96	39.8	
13	44.3		30	44.4		47	42.5		63	50.1	c	80	42.5		97	40.2	
14	43.0		31	46.2	br	48	43.0		64	46.1		81	41.9		98	42.9	
15	43.7		32	44.9		49	47.0		65	55.3	c	82	41.7		99	41.8	
16	43.6		33	45.1		50	52.2	br	66	52.3	c	83	41.8		100	41.7	
17	45.0		34	47.3	br				67	50.9	c	84	40.3		Leq:	45.8	

a: aircraft c: car(s) tk: truck d: dog nc: no cars mc: motorcycle
 b: bus br: bird cn: construction p: pedestrian



Maximum Value: 56.1
 Minimum Value: 39.8

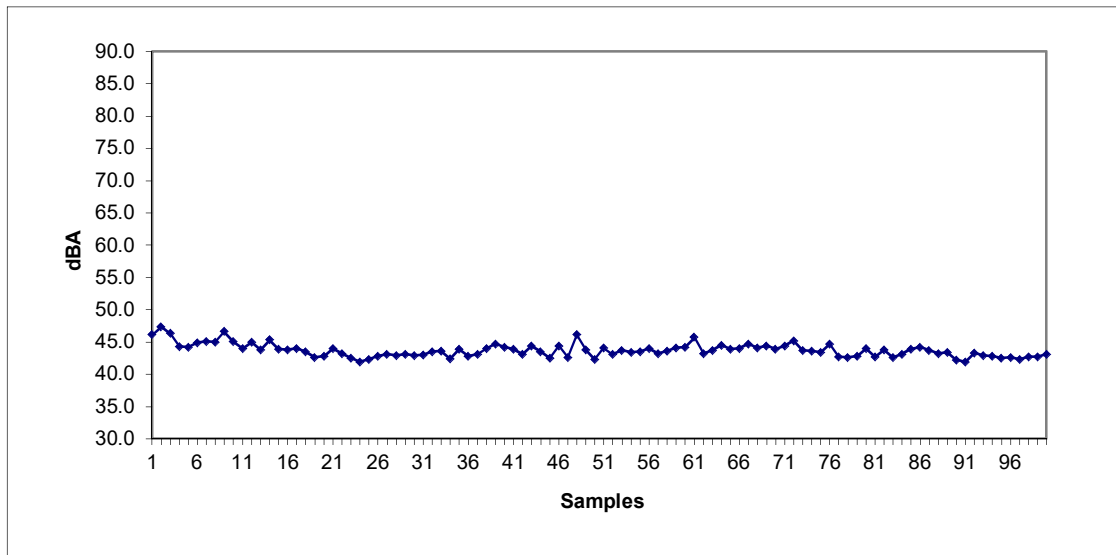
NOISE SURVEY DATA SHEET

STATION 4

Date:	6/29/18	Field Notes:	Occasional passing traffic at nearby intersection
Time:	9:45 AM		Ambient bird calls
Interval:	10 seconds		
Location:	3rd st dead end, intersection w/ Carrie Ave.		
Weather:	77F Clear		
Description:	In residential neighborhood, approx. 10' from property line		

1	46.1		18	43.5		35	43.9		51	44.1		68	44.1		85	43.9
2	47.3		19	42.6		36	42.8		52	43.1		69	44.4		86	44.2
3	46.3		20	42.8		37	43.1		53	43.7		70	43.9		87	43.7
4	44.3		21	44.0		38	44.0		54	43.4		71	44.4		88	43.2
5	44.2		22	43.2		39	44.7		55	43.5		72	45.2		89	43.4
6	44.9		23	42.5		40	44.2		56	44.0		73	43.7		90	42.2
7	45.1		24	41.9		41	43.9		57	43.2		74	43.6		91	41.9
8	45.0		25	42.3		42	43.1		58	43.6		75	43.4		92	43.3
9	46.6		26	42.8		43	44.4		59	44.1		76	44.7		93	42.9
10	45.1		27	43.1		44	43.5		60	44.2		77	42.7		94	42.8
11	44.0		28	42.9		45	42.5		61	45.7		78	42.6		95	42.5
12	45.0		29	43.1		46	44.4		62	43.2		79	42.8		96	42.6
13	43.8		30	42.9		47	42.6		63	43.7		80	44.0		97	42.3
14	45.3		31	43.0		48	46.1		64	44.5		81	42.7		98	42.7
15	43.9		32	43.5		49	43.8		65	43.9		82	43.8		99	42.7
16	43.8		33	43.6		50	42.3		66	44.0		83	42.6		100	43.1
17	44.0		34	42.4					67	44.7		84	43.1		Leq:	43.8

a: aircraft c: car(s) tk: truck d: dog nc: no cars mc: motorcycle
 b: bus br: bird cn: construction p: pedestrian



Maximum Value: 47.3
 Minimum Value: 41.9

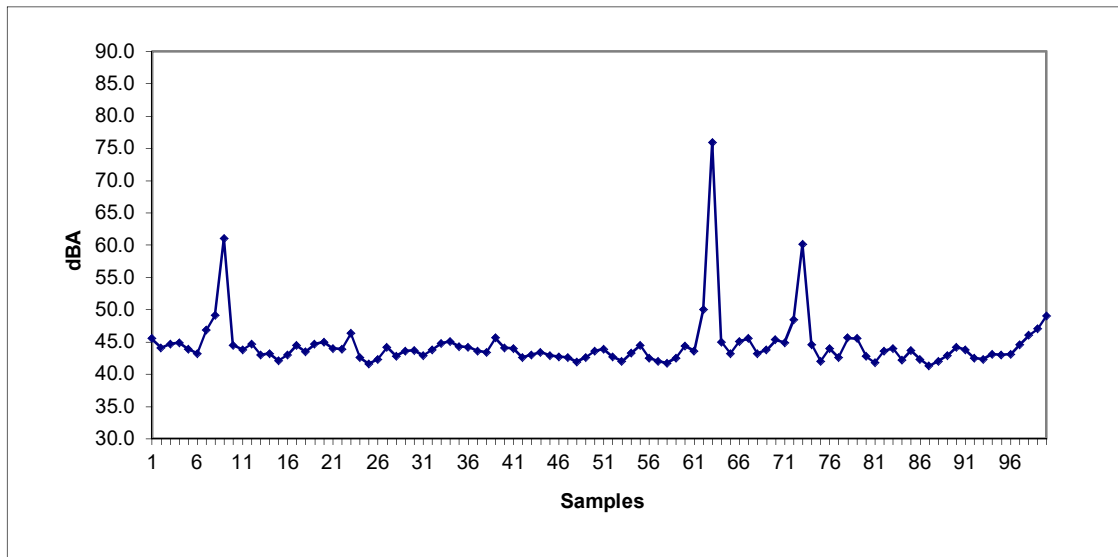
NOISE SURVEY DATA SHEET

STATION 5

Date:	6/29/18	Field Notes:	Minimal traffic present
Time:	10:00 AM		Ambient bird calls
Interval:	10 seconds		
Location:	Intersection of Carrie St and Marion St.		
Weather:	77F Clear		
Description:	In residential neighborhood, along proposed sidewalk entrance		

1	45.5		18	43.5		35	44.3		51	43.9		68	43.2		85	43.7	
2	44.1		19	44.7		36	44.2		52	42.7		69	43.8		86	42.3	
3	44.7		20	45.0		37	43.6		53	42.0		70	45.3		87	41.3	
4	44.9		21	44.0		38	43.4		54	43.3		71	44.9		88	42.0	
5	43.9		22	43.9		39	45.6		55	44.5		72	48.4		89	42.9	
6	43.2		23	46.3	br	40	44.1		56	42.5		73	60.1	c	90	44.2	
7	46.8	c	24	42.6		41	44.0		57	42.0		74	44.6		91	43.8	
8	49.1	c	25	41.6		42	42.6		58	41.7		75	42.0		92	42.5	
9	61.0	c	26	42.3		43	43.0		59	42.5		76	44.0		93	42.3	
10	44.5		27	44.2		44	43.4		60	44.4		77	42.6		94	43.1	
11	43.8		28	42.8		45	42.9		61	43.6		78	45.6		95	43.0	
12	44.7		29	43.6		46	42.7		62	50.0	c	79	45.5		96	43.1	
13	43.0		30	43.7		47	42.6		63	75.9	c	80	42.8		97	44.6	
14	43.2		31	42.9		48	41.9		64	45.0		81	41.8		98	46.0	
15	42.1		32	43.8		49	42.6		65	43.2		82	43.6		99	47.0	br
16	43.0		33	44.8		50	43.6		66	45.1		83	44.0		100	49.0	br
17	44.5		34	45.1					67	45.5		84	42.2		Leq:	56.4	

a: aircraft c: car(s) tk: truck d: dog nc: no cars mc: motorcycle
 b: bus br: bird cn: construction p: pedestrian x: multiple cars



Maximum Value: 75.9
 Minimum Value: 41.3

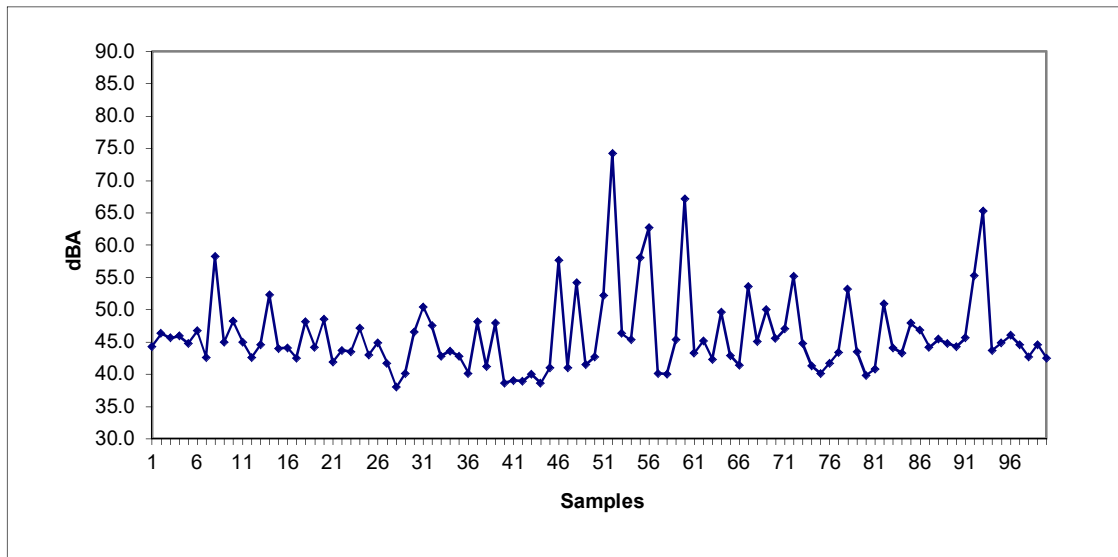
NOISE SURVEY DATA SHEET

STATION 6

Date: 6/29/18 **Field Notes:**
Time: 10:20 AM Occasional residential traffic
Interval: 10 seconds Ambient bird calls, distant lawn services
Location: 100' from Sterling Rd/ Terry Rd. intrsectn
Weather: 80F Clear
Description: In residential neighborhood, along proposed sidewalk entrance

1	44.3		18	48.1	c	35	42.8		51	52.2	c	68	45.1		85	47.9	c
2	46.3		19	44.2		36	40.1		52	74.2	tr	69	50.0	c	86	46.8	
3	45.6		20	48.5	c	37	48.1	br	53	46.3		70	45.5		87	44.2	
4	45.9		21	41.9		38	41.2		54	45.3		71	47.0		88	45.4	
5	44.8		22	43.7		39	47.9	br	55	58.0	c	72	55.2	c	89	44.8	
6	46.7		23	43.5		40	38.6		56	62.7	c	73	44.8		90	44.3	
7	42.6		24	47.1	c	41	39.0		57	40.1		74	41.3		91	45.6	
8	58.2	c	25	43.0		42	38.9		58	40.0		75	40.1		92	55.3	tr
9	45.0		26	44.9		43	40.0		59	45.3		76	41.7		93	65.3	tr
10	48.2	c	27	41.7		44	38.6		60	67.2	c	77	43.4		94	43.7	
11	45.0		28	38.0		45	41.0		61	43.3		78	53.2	c	95	44.9	
12	42.6		29	40.1		46	57.6	c	62	45.2		79	43.5		96	46.0	
13	44.6		30	46.5		47	41.0		63	42.3		80	39.8		97	44.6	
14	52.3	c	31	50.4	c	48	54.2	br	64	49.6	br	81	40.8		98	42.7	
15	44.0		32	47.5	c	49	41.5		65	42.9		82	50.9	c	99	44.6	
16	44.1		33	42.8		50	42.7		66	41.4		83	44.1		100	42.5	
17	42.5		34	43.6					67	53.6	c	84	43.3		Leq:	56.3	

a: aircraft c: car(s) tk: truck d: dog nc: no cars mc: motorcycle
 b: bus br: bird cn: construction p: pedestrian x: multiple cars



Maximum Value: 74.2
 Minimum Value: 38.0

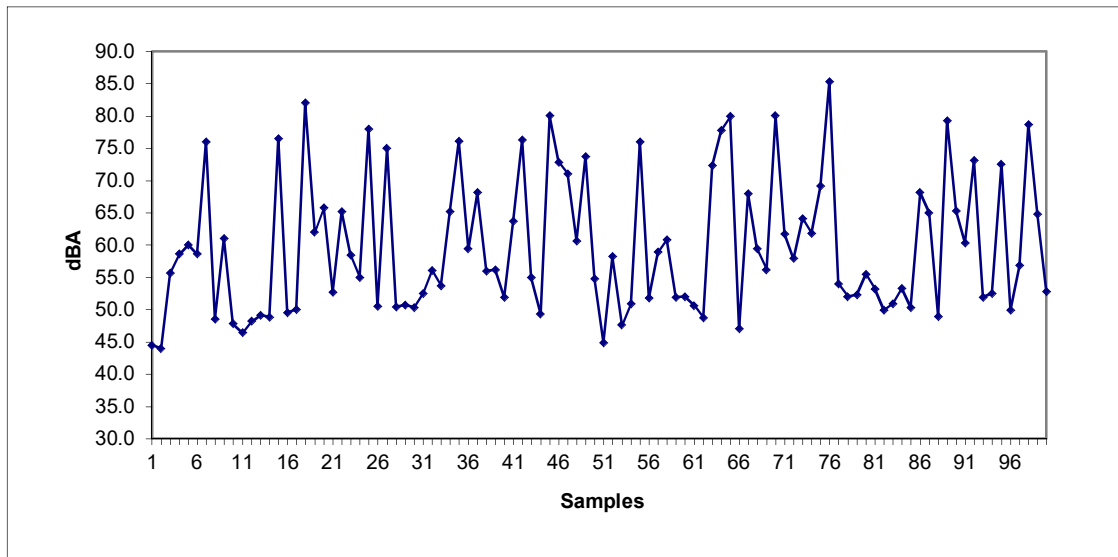
NOISE SURVEY DATA SHEET

STATION 7

Date:	6/29/18	Field Notes:	Periodic heavy traffic along Terry Road
Time:	10:50 AM		Lawnmowers at several residences nearby
Interval:	10 seconds		
Location:	Along Terry Rd., 100' SE of Bohemia Parkway Intersection		
Weather:	80F Clear		
Description:	In residential neighborhood at proposed driveway entrance		

1	44.5		18	82.0	c	35	76.1	c	51	44.9		68	59.4	c	85	50.3	
2	44.0		19	62.0	c	36	59.4	c	52	58.2	c	69	56.2		86	68.1	c
3	55.7	c	20	65.8	c	37	68.1	c	53	47.6		70	80.0	c	87	65.0	c
4	58.6	c	21	52.7		38	56.0		54	50.9		71	61.7	c	88	48.9	
5	60.0	l	22	65.2	c	39	56.2		55	76.0	c	72	57.9		89	79.3	tr
6	58.6	l	23	58.4		40	51.9		56	51.8		73	64.1	c	90	65.3	c
7	76.0	c	24	55.0		41	63.7	c	57	58.9	c	74	61.8	c	91	60.3	l
8	48.5		25	78.0	c	42	76.3	c	58	60.8	c	75	69.1	c	92	73.1	c
9	61.0	c	26	50.5		43	55.0		59	51.9		76	85.3	tr	93	51.9	
10	47.8		27	75.0	c	44	49.3		60	52.0		77	54.0		94	52.5	
11	46.4		28	50.4		45	80.0	tr	61	50.6		78	52.0		95	72.5	c
12	48.2		29	50.7		46	72.8	c	62	48.7		79	52.3		96	49.9	
13	49.1		30	50.3		47	71.0	c	63	72.3	c	80	55.5		97	56.8	
14	48.8		31	52.5		48	60.6	c	64	77.8	c	81	53.2		98	78.7	c
15	76.5	c	32	56.1		49	73.7	c	65	79.9	c	82	49.9		99	64.8	c
16	49.5		33	53.7		50	54.8		66	47.0		83	50.9		100	52.8	
17	50.0		34	65.2	c				67	68.0	c	84	53.3		Leq:	71.8	

a: aircraft c: car(s) tk: truck d: dog nc: no cars mc: motorcycle
 b: bus br: bird cn: construction p: pedestrian x: multiple cars l: lawn care



Maximum Value: 85.3
 Minimum Value: 44.0

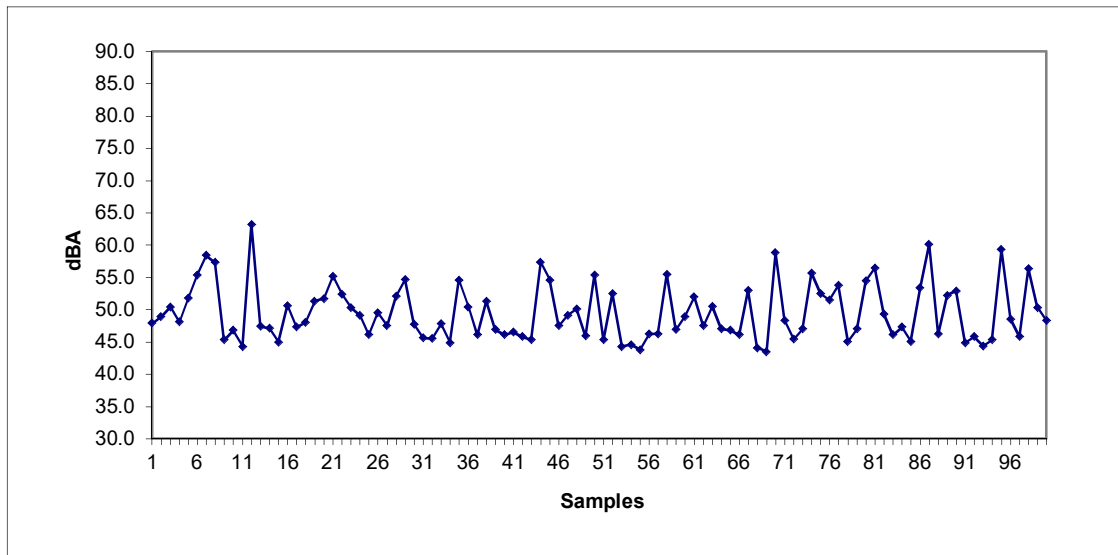
NOISE SURVEY DATA SHEET

STATION 8

Date:	6/29/18	Field Notes:	
Time:	11:15 AM	Active intersection	
Interval:	10 seconds	Lawnmowers at several residences nearby	
Location:	Intersection of Bohemia Parkway		
Weather:	81F clear		
Description:	Along existing property line		

1	47.9		18	48.0		35	54.6	c	51	45.3		68	44.1		85	45.1	
2	48.9		19	51.3	c	36	50.4	c	52	52.5	c	69	43.5		86	53.4	c
3	50.4		20	51.7	c	37	46.1		53	44.3		70	58.8	c	87	60.1	c
4	48.1		21	55.2	c	38	51.3	c	54	44.6		71	48.3		88	46.2	
5	51.8	tr	22	52.4	c	39	46.9		55	43.8		72	45.4		89	52.2	c
6	55.4	c	23	50.3	c	40	46.1		56	46.2		73	47.0		90	52.9	c
7	58.4	c	24	49.1		41	46.5		57	46.3		74	55.7	c	91	44.9	
8	57.3	c	25	46.1		42	45.8		58	55.5	c	75	52.5	c	92	45.8	
9	45.3		26	49.5		43	45.3		59	46.9		76	51.5	c	93	44.4	
10	46.8		27	47.5		44	57.3	c	60	48.9	l	77	53.8	c	94	45.3	
11	44.3		28	52.1	c	45	54.6	c	61	52.0	l	78	45.1		95	59.3	c
12	63.2	c	29	54.7	c	46	47.5		62	47.5		79	47.0		96	48.5	
13	47.4		30	47.7		47	49.1		63	50.5	c	80	54.5	c	97	45.8	
14	47.1		31	45.6		48	50.1	c	64	47.0		81	56.5	c	98	56.4	c
15	45.0		32	45.5		49	45.9		65	46.8		82	49.3		99	50.3	
16	50.6		33	47.8		50	55.4		66	46.1		83	46.1		100	48.3	
17	47.3		34	44.9					67	53.0	c	84	47.3		Leq:	52.2	

a: aircraft c: car(s) tk: truck d: dog nc: no cars mc: motorcycle
 b: bus br: bird cn: construction p: pedestrian x: multiple cars l: lawn care



Maximum Value: 63.2
 Minimum Value: 43.5

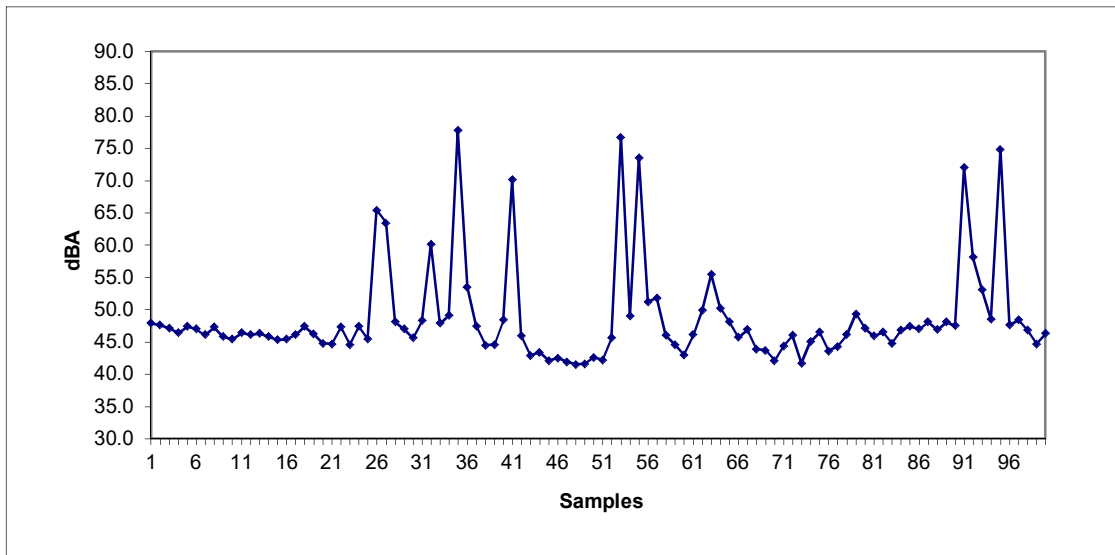
NOISE SURVEY DATA SHEET

STATION 9

Date:	6/29/18	Field Notes:	Residential road
Time:	11:30 AM		Local traffic, between stop signs
Interval:	10 seconds		
Location:	Along Bohemia Highway, 1000' N of Station 8		
Weather:	80F clear		
Description:	Along proposed property line		

1	47.9		18	47.4		35	77.8	tr	51	42.2		68	43.9		85	47.4	
2	47.6		19	46.2		36	53.5		52	45.6		69	43.7		86	47.0	
3	47.1		20	44.8		37	47.4		53	76.7	c	70	42.1		87	48.1	br
4	46.4		21	44.7		38	44.5		54	49.0		71	44.4		88	46.9	
5	47.4		22	47.3		39	44.6		55	73.5	c	72	46.0		89	48.1	br
6	47.0		23	44.6		40	48.4		56	51.2		73	41.7		90	47.5	
7	46.1		24	47.4		41	70.1	tr	57	51.8		74	45.1		91	72.0	c
8	47.3		25	45.4		42	45.9		58	46.0		75	46.5		92	58.1	c
9	45.8		26	65.4	c	43	42.9		59	44.6		76	43.6		93	53.1	
10	45.4		27	63.4	c	44	43.4		60	43.0		77	44.3		94	48.5	
11	46.4		28	48.1		45	42.1		61	46.1		78	46.1		95	74.8	c
12	46.1		29	47.0		46	42.5		62	49.9	tr	79	49.3	br	96	47.6	
13	46.3		30	45.6		47	41.9		63	55.5		80	47.1		97	48.4	
14	45.8		31	48.3		48	41.5		64	50.2		81	45.9		98	46.8	
15	45.3		32	60.1	c	49	41.6		65	48.1		82	46.5		99	44.7	
16	45.4		33	47.9		50	42.6		66	45.7		83	44.8		100	46.3	
17	46.1		34	49.1					67	46.9		84	46.8		Leq:	63.0	

a: aircraft c: car(s) tk: truck d: dog nc: no cars mc: motorcycle
 b: bus br: bird cn: construction p: pedestrian x: multiple cars



Maximum Value: 77.8
 Minimum Value: 41.5

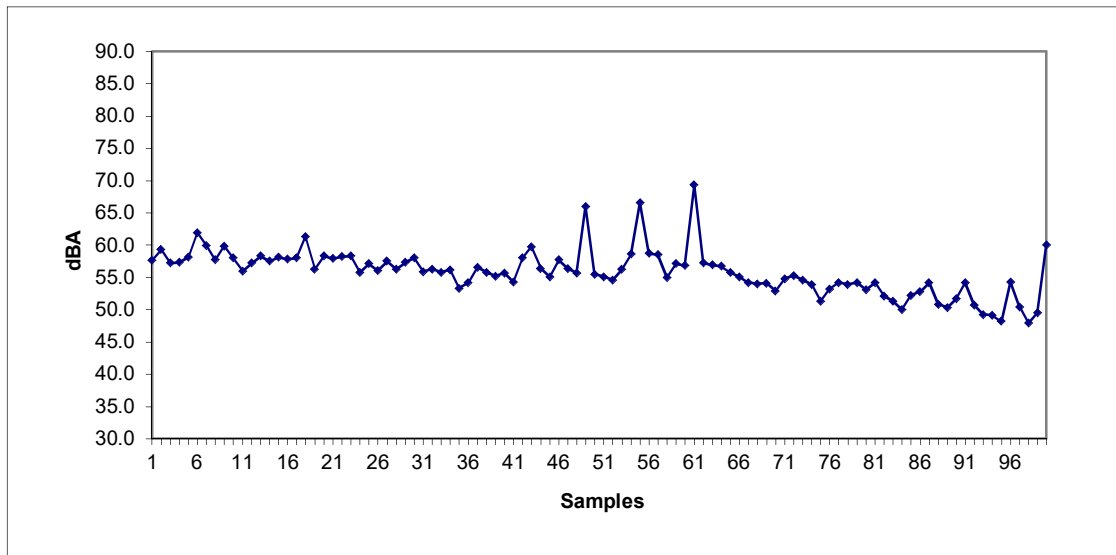
NOISE SURVEY DATA SHEET

STATION 10

Date: 6/29/18 **Field Notes:**
Time: 11:50 AM Distant highway traffic
Interval: 10 seconds Local traffic at the stop sign
Location: Intsectn of Bohemia Pkwy and E. Golf St.
Weather: 82F clear
Description: In residential neighborhood, approx. 10' from property line

1	57.6		18	61.3	m	35	53.3		51	55.1		68	54.0		85	52.2	
2	59.3		19	56.3		36	54.2		52	54.6		69	54.1		86	52.8	
3	57.2		20	58.3		37	56.6		53	56.3		70	52.9		87	54.2	
4	57.3		21	57.9		38	55.8		54	58.6	c	71	54.8		88	50.8	
5	58.1		22	58.2		39	55.2		55	66.6	c	72	55.3		89	50.3	
6	61.9		23	58.3		40	55.7		56	58.7	c	73	54.6		90	51.7	
7	59.9		24	55.8		41	54.3		57	58.5		74	53.9		91	54.2	
8	57.7		25	57.1		42	58.0	br	58	55.0		75	51.3		92	50.7	
9	59.8		26	56.1		43	59.7	br	59	57.1		76	53.2		93	49.2	
10	58.0		27	57.5		44	56.4		60	56.8		77	54.2		94	49.1	
11	56.0		28	56.3		45	55.1		61	69.3	c	78	53.9		95	48.2	
12	57.2		29	57.3		46	57.7		62	57.2		79	54.2		96	54.3	
13	58.3		30	58.0	c	47	56.4		63	56.9		80	53.1		97	50.4	
14	57.5		31	55.9		48	55.7		64	56.7		81	54.2		98	47.9	
15	58.1		32	56.3		49	66.0	c	65	55.8		82	52.1		99	49.5	
16	57.8		33	55.8		50	55.5		66	55.1		83	51.3		100	60.0	c
17	58.0		34	56.2					67	54.2		84	50.0		Leq:	57.7	

a: aircraft c: car(s) tk: truck d: dog nc: no cars mc: motorcycle
 b: bus br: bird cn: construction p: pedestrian x: multiple cars



Maximum Value: 69.3
 Minimum Value: 47.9

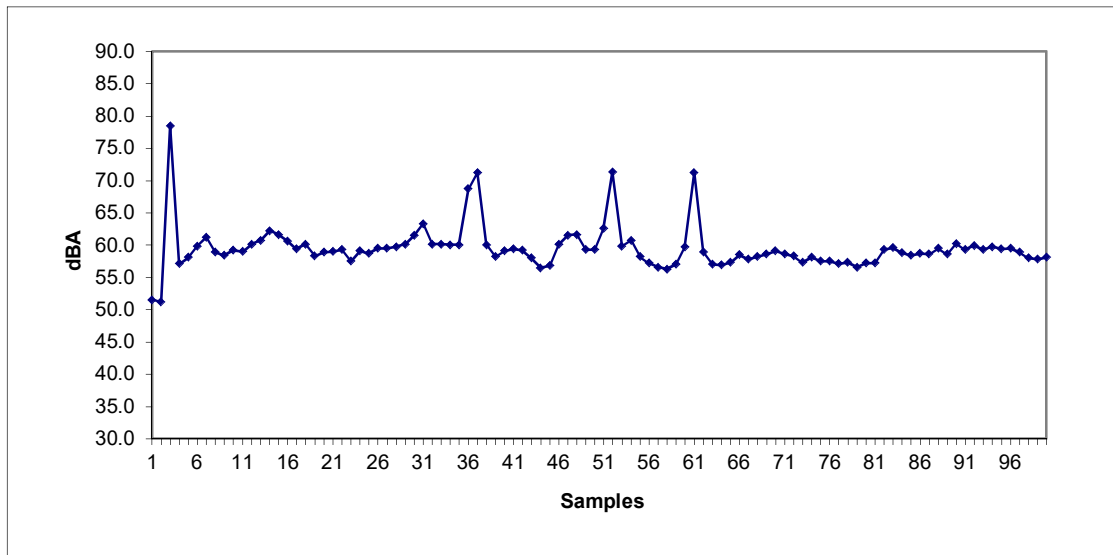
NOISE SURVEY DATA SHEET

STATION 11

Date:	6/29/18	Field Notes:	Runs parallel to Sunrise highway
Time:	12:15 PM		Occasional passing cars
Interval:	10 seconds		
Location:	Intsectn of Fulton Ave and 11th St.		
Weather:	83F and clear		
Description:	In residential neighborhood, approx. 10' from proposed property entrance		

1	51.5		18	60.1		35	60.0		51	62.6	c	68	58.2		85	58.4	
2	51.2		19	58.3		36	68.7		52	71.3	c	69	58.6		86	58.7	
3	78.5	c	20	58.9		37	71.2		53	59.8		70	59.1		87	58.6	
4	57.1		21	59.0		38	60.0		54	60.7	br	71	58.6		88	59.5	
5	58.1		22	59.3		39	58.2		55	58.2		72	58.3		89	58.6	
6	59.8		23	57.5		40	59.1		56	57.2		73	57.3		90	60.2	
7	61.2		24	59.1		41	59.4		57	56.6		74	58.1		91	59.3	
8	58.9		25	58.7		42	59.2		58	56.3		75	57.5		92	59.9	
9	58.4		26	59.5		43	58.0		59	57.0		76	57.5		93	59.3	
10	59.2		27	59.5		44	56.5		60	59.7		77	57.1		94	59.7	
11	59.0	c	28	59.7		45	56.8		61	71.2	c	78	57.3		95	59.4	
12	60.1		29	60.1		46	60.1		62	58.9		79	56.6		96	59.5	
13	60.7		30	61.5		47	61.5	br	63	57.0		80	57.2		97	58.9	
14	62.2		31	63.3	m	48	61.6	br	64	56.9		81	57.2		98	58.0	
15	61.6		32	60.1		49	59.3		65	57.3		82	59.3		99	57.8	
16	60.6		33	60.1		50	59.3		66	58.5		83	59.6		100	58.1	
17	59.4		34	60.0					67	57.8		84	58.8		Leq:	62.9	

a: aircraft c: car(s) tk: truck d: dog nc: no cars mc: motorcycle
 b: bus br: bird cn: construction p: pedestrian x: multiple cars



Maximum Value: 78.5
 Minimum Value: 51.2

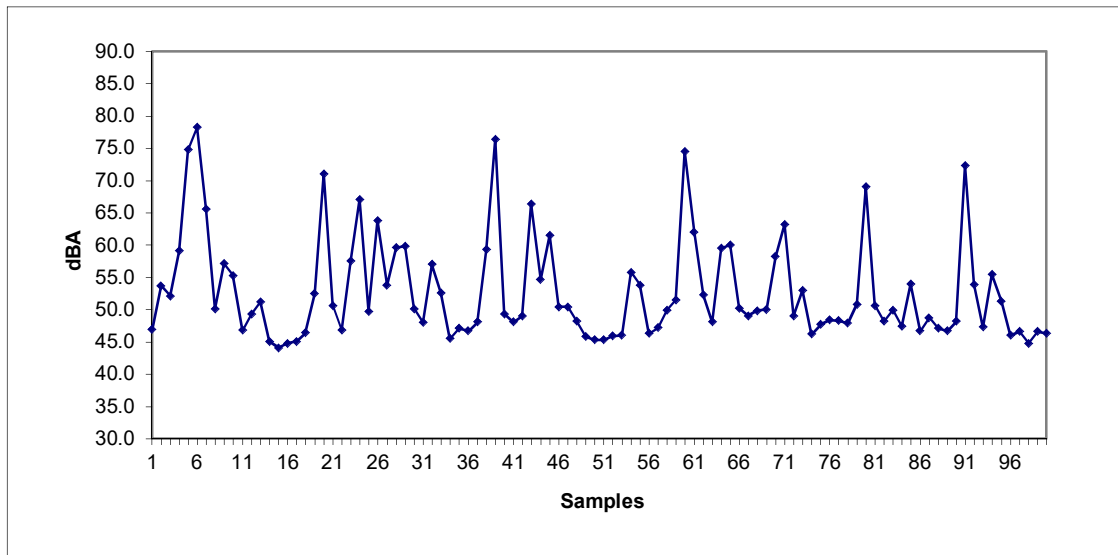
NOISE SURVEY DATA SHEET

STATION 12

Date: 6/29/18 **Field Notes:**
Time: 12:30PM Residential Road
Interval: 10 seconds Local traffic between stop signs
Location: On Bourne Blvd between Walnut Ave and Oak Ave
Weather: 83F clear
Description: Local source of increased noise levels

1	46.9		18	46.4		35	47.1		51	45.3		68	49.8		85	54.0	
2	53.7		19	52.5		36	46.7		52	45.9		69	50.0		86	46.7	
3	52.1		20	71.0	c	37	48.1		53	46.0		70	58.2		87	48.7	
4	59.1		21	50.6		38	59.3		54	55.8	c	71	63.2	c	88	47.1	
5	74.8	tr	22	46.8		39	76.4	c	55	53.8		72	49.0		89	46.7	
6	78.3	tr	23	57.5		40	49.3		56	46.3		73	53.0		90	48.2	
7	65.6	tr	24	67.1	c	41	48.1		57	47.2		74	46.2		91	72.3	c
8	50.1		25	49.7		42	49.0		58	49.9		75	47.7		92	53.9	c
9	57.1	c	26	63.8	c	43	66.4	c	59	51.5		76	48.4		93	47.3	
10	55.3		27	53.8		44	54.7		60	74.5	tr	77	48.3		94	55.5	
11	46.8		28	59.6	c	45	61.5	c	61	62.0	c	78	47.9		95	51.3	
12	49.3		29	59.8	c	46	50.4		62	52.3		79	50.8		96	46.0	
13	51.2	c	30	50.1		47	50.4		63	48.1		80	69.0	c	97	46.6	c
14	45.1		31	48.0		48	48.2		64	59.5	c	81	50.6		98	44.8	
15	44.1		32	57.0	c	49	45.8		65	60.0	c	82	48.2		99	46.6	
16	44.8		33	52.6		50	45.3		66	50.2		83	49.9		100	46.3	
17	45.1		34	45.5					67	49.0		84	47.4		Leq:	63.9	

a: aircraft c: car(s) tk: truck d: dog nc: no cars mc: motorcycle
 b: bus br: bird cn: construction p: pedestrian x: multiple cars



Maximum Value: 78.3
 Minimum Value: 44.1

Appendix I-2
Noise Attenuation Worksheet

Sound Level Attenuation Worksheet
Analysis of Sound Levels at Nearest Residential Property Lines (and elementary school)

STATION	Source	Parameter									
		Source Noise Level (dBA)	Radius 1 (feet)	Radius to apply if R1 < 15' (feet) *	Distance between the source and receptor (feet)	Sound level absent additional attenuation (accounts for attenuation due to inverse square law) (dBA) **	Attenuation for vegetation (5 dBA per 100' width of dense vegetation) (dBA)	Adjusted Source Level (dBA)	Ambient Noise Level (dBA)	Combined Noise Level (of (Adj/10 + Amb/10) (dBA)	Net Increase (dBA)
1	Lawn mower - gas engine	70.0	10	15	25	65.6	0	65.6	53.9	65.8	11.9
1	Vehicle entering site (assumes 2 vehicles)	65.7	25	25	140	50.7	0	50.7	53.9	55.6	1.7
2	Lawn mower - gas engine	70.0	10	15	35	62.6	2	60.6	51.6	61.2	9.6
2	Vehicle in parking lot (assumes 1 vehicle)	62.7	25	25	80	52.6	2	50.6	51.6	54.1	2.5
3	Lawn mower - gas engine	70.0	10	15	25	65.6	2	63.6	45.8	63.6	17.8
3	Vehicle in parking lot (assumes 1 vehicle)	62.7	25	25	280	41.7	2	39.7	45.8	46.8	1.0
4	Lawn mower - gas engine	70.0	10	15	55	58.7	2	56.7	43.8	56.9	13.1
4	Vehicle on internal roadway (assumes 1 vehicle)	62.7	25	25	100	50.7	2	48.7	43.8	49.9	6.1
5	Lawn mower - gas engine	70.0	10	15	30	64.0	2	62.0	56.4	63.0	6.6
5	Vehicle in parking lot (assumes 1 vehicle)	62.7	25	25	75	53.2	2	51.2	56.4	57.5	1.1
6	Lawn mower - gas engine	70.0	10	15	30	64.0	2	62.0	56.3	63.0	6.7
6	Vehicle in parking lot (assumes 1 vehicle)	62.7	25	25	100	50.7	2	48.7	56.3	57.0	0.7
7	Lawn mower - gas engine	70.0	10	15	50	59.5	0	59.5	71.8	72.1	0.3
7	Vehicle entering site (assumes 2 vehicles)	65.7	25	25	50	59.7	0	59.7	71.8	72.1	0.3
8	Lawn mower - gas engine	70.0	10	15	40	61.5	0	61.5	52.2	62.0	9.8
8	Vehicle in parking lot (assumes 2 vehicles)	65.7	25	25	125	51.7	2	49.7	52.2	54.1	1.9
9	Lawn mower - gas engine	70.0	10	15	35	62.6	0	62.6	63.0	65.8	2.8
9	Vehicle in parking lot (assumes 2 vehicles)	65.7	25	25	150	50.1	2	48.1	63.0	63.1	0.1
10	Lawn mower - gas engine	70.0	10	15	40	61.5	0	61.5	57.7	63.0	5.3
10	Vehicle in parking lot (assumes 2 vehicles)	65.7	25	25	115	52.5	2	50.5	57.7	58.5	0.8
11	Lawn mower - gas engine	70.0	10	15	50	59.5	0	59.5	62.9	64.5	1.6
11	Vehicle entering/exiting site (assumes 4 vehicles)	68.7	25	25	50	62.7	0	62.7	62.9	65.8	2.9
12	Construction on site - Concrete spreader and two heavy trucks	93.8	50	50	1300	65.5	5	60.5	63.9	65.5	1.6
12	Lawn mower - gas engine	70.0	10	15	1300	31.2	5	26.2	63.9	63.9	0.0

* Radius 1 replacement value. It is noted that the laws of the inverse square law apply at a distance of at least 15' away from the source - therefore 15' must be assumed (otherwise the drop off level assumptions for attenuation with distance will be exaggerated).

** Calculated using the following formula: $SP_2 = SP_1 - 20 * (\log \text{Radius } 2 / \text{Radius } 1)$ Where SP is sound pressure level, Radius 1 is the distance from the source and Radius 2 is the distance of the receptor or property line in this example (except when the Radius 1 is less than 15, when a distance of 15' must be assumed as noted above).

Width of vegetation: varies

