

FIGURES

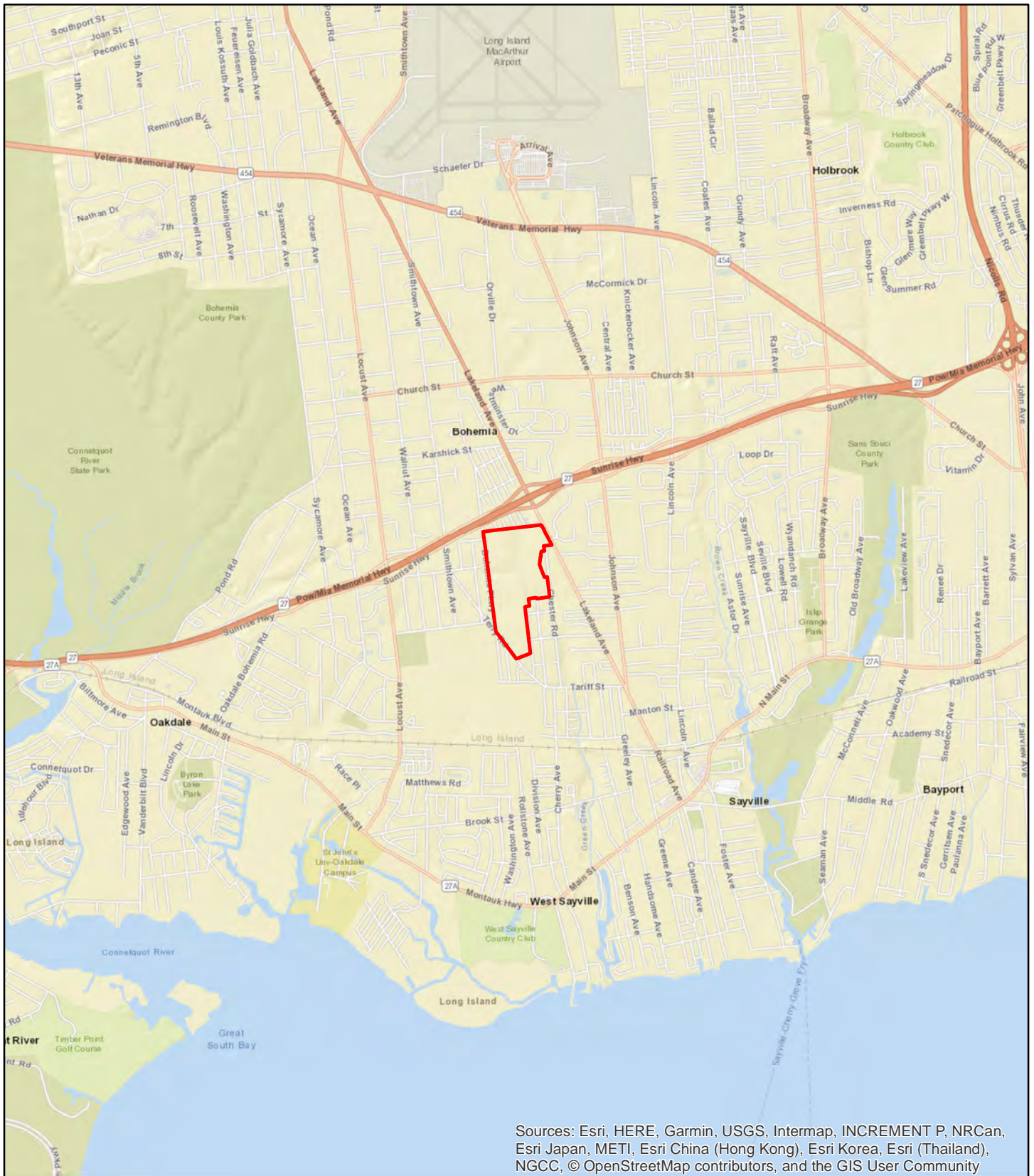


FIGURE 1-1a
LOCATION MAP, REGION

Source: ESRI Web Mapping Service Scale: 1
inch = 4,000 feet



Greybarn - Sayville
PDD-GS

Draft EIS



FIGURE 1-1b
LOCATION MAP, LOCAL

Source: ESRI Web Mapping Service Scale: 1
inch = 600 feet



Greybarn - Sayville
PDD-GS

Draft EIS



**FIGURE 1-2
RENDERED MASTER PLAN**

Source: NYS Orthophotography, 2016; Architect
Rendered Plan, 4/2017 Scale: 1 inch = 500 feet



**Greybarn - Sayville
PDD-GS**

Draft EIS



Esri, HERE, Garmin, © OpenStreetMap contributors

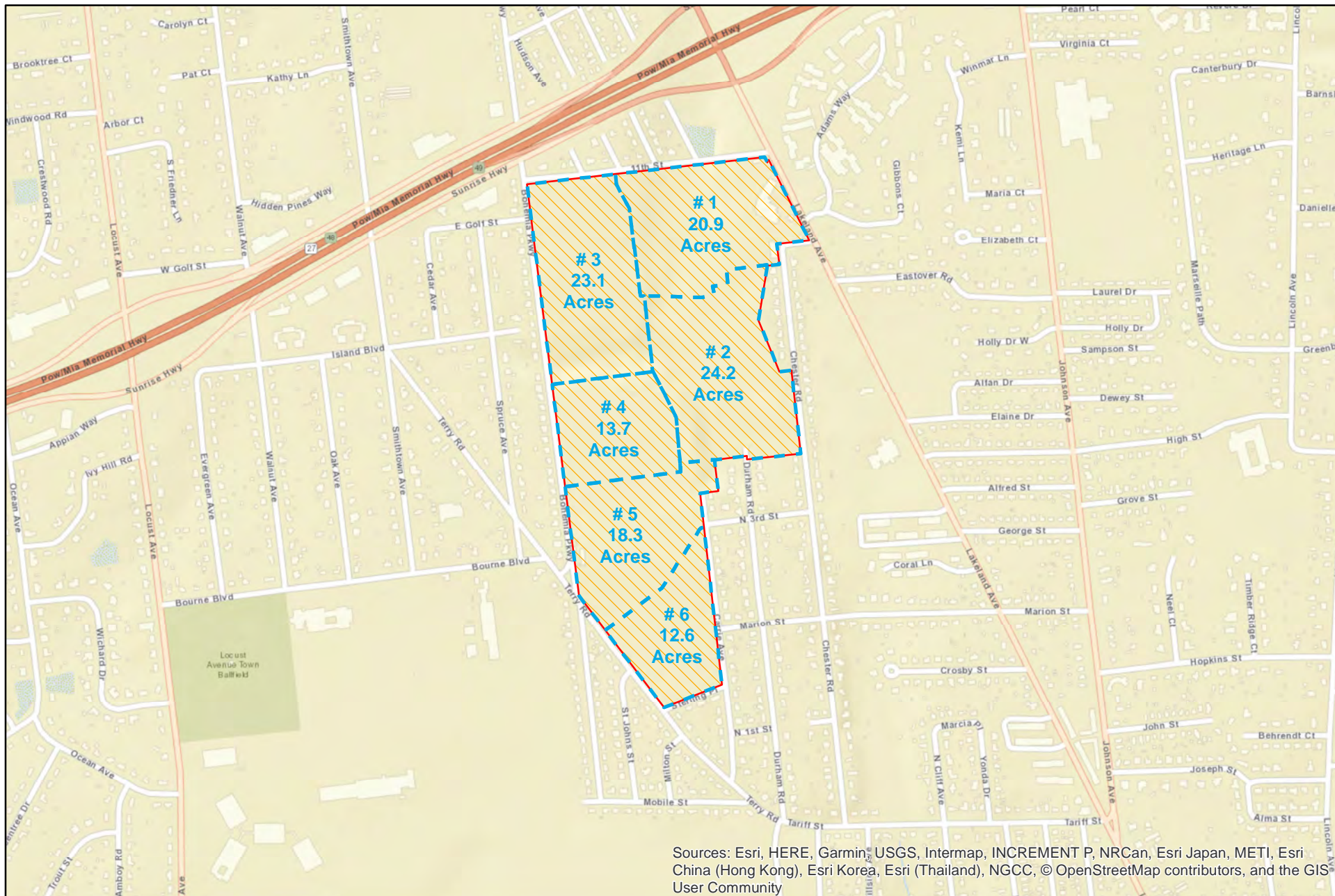
**FIGURE 1-3
EXISTING SITE AND
AREA CONDITIONS**

Source: NYS Orthophotography, 2016
Scale: 1 inch = 500 feet



**Greybarn - Sayville
PDD-GS**

Draft EIS



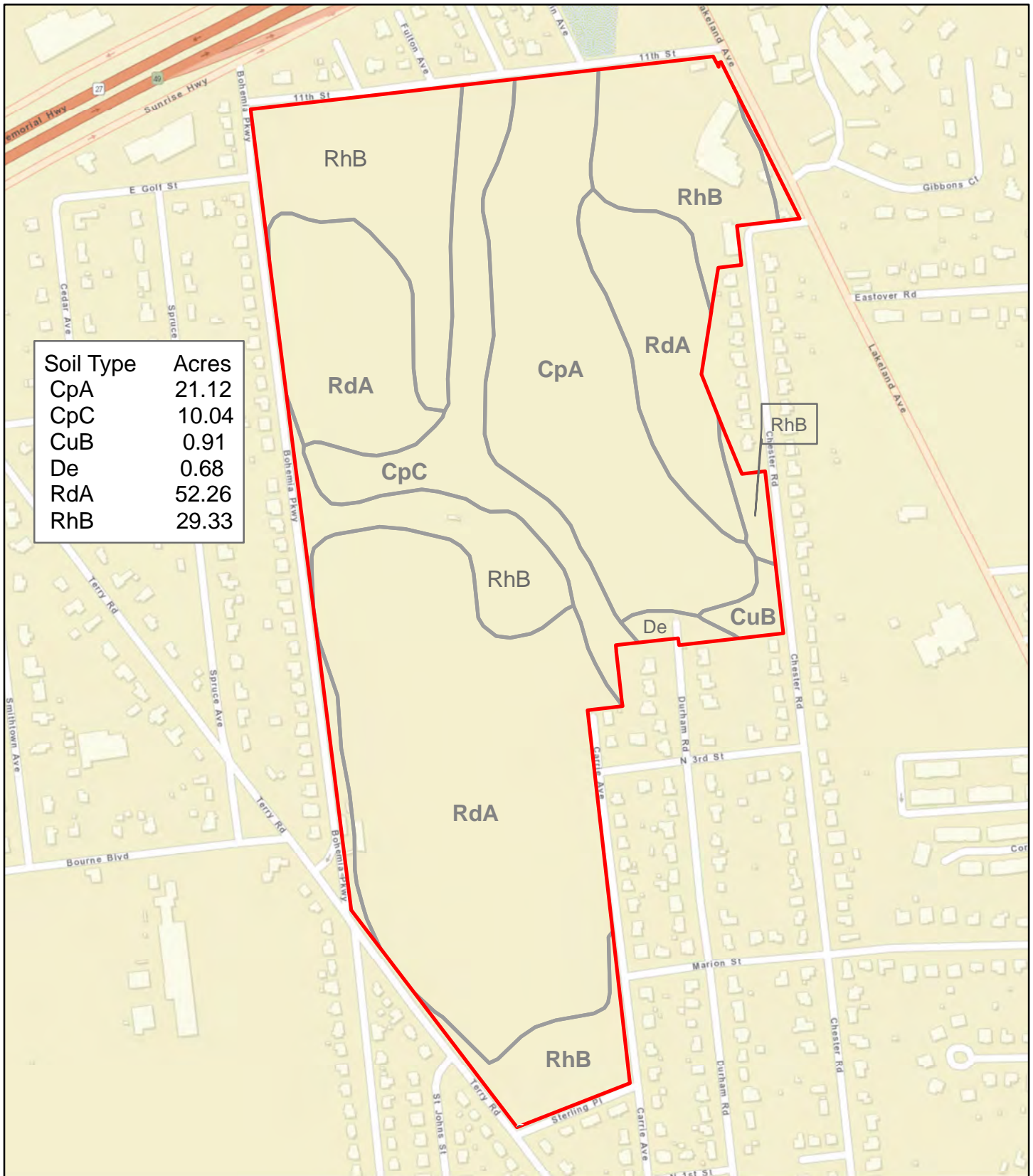
**FIGURE 1-4
PHASING PLAN**

Source: base from ESRI Web Map Server;
Site Plan from Bowne AE&T, 12/2016; Suffolk County, NY
Scale: 1 inch = 951.416667 feet



**Greybarn -Sayville
PDD-GS**

Draft EIS



**FIGURE 2-1
SOIL MAP**

Source: ESRI Web Mapping Service, NRCS
Scale: 1 inch = 500 feet



**Greybarn - Sayville
PDD-GS**

Draft EIS



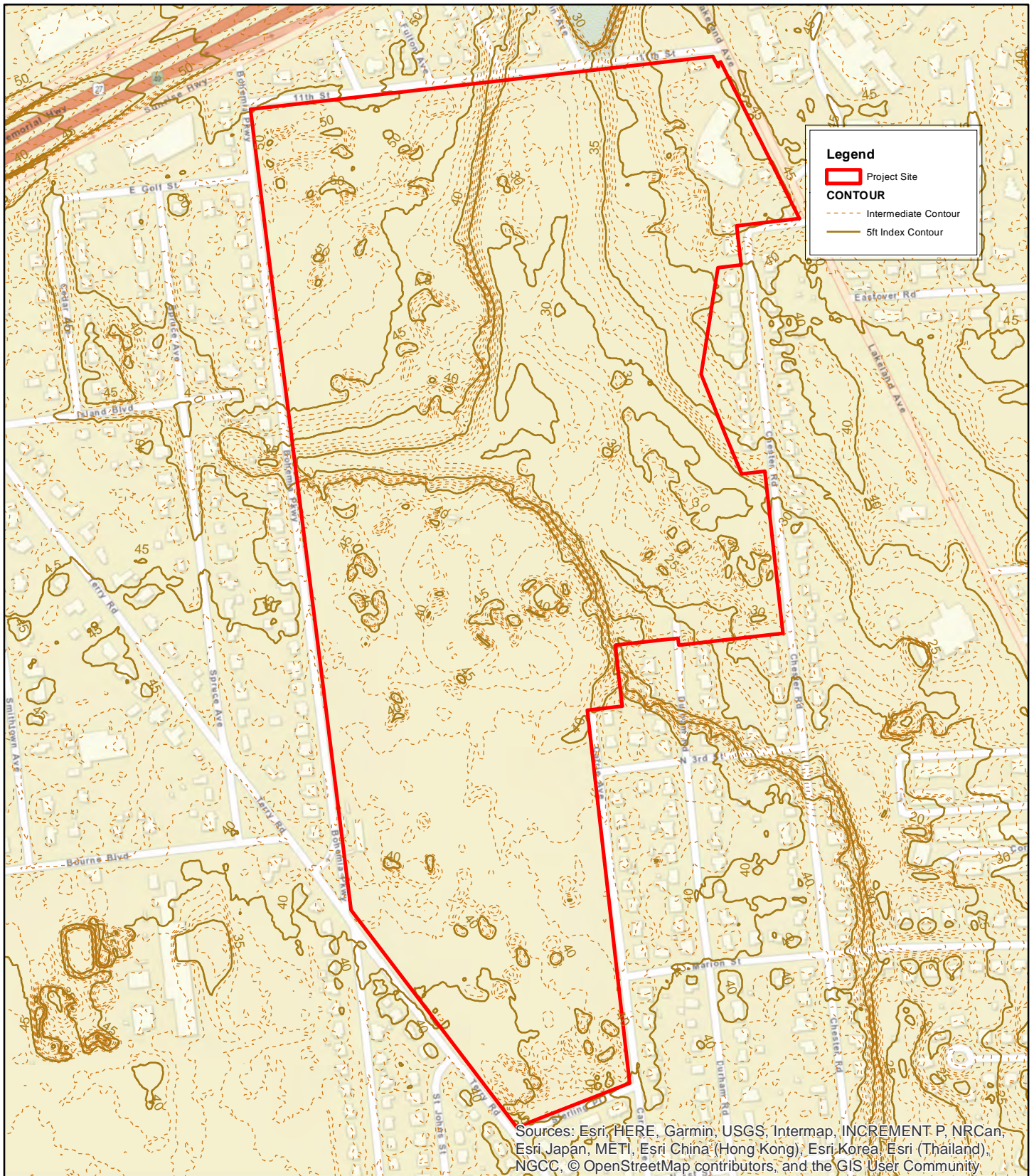


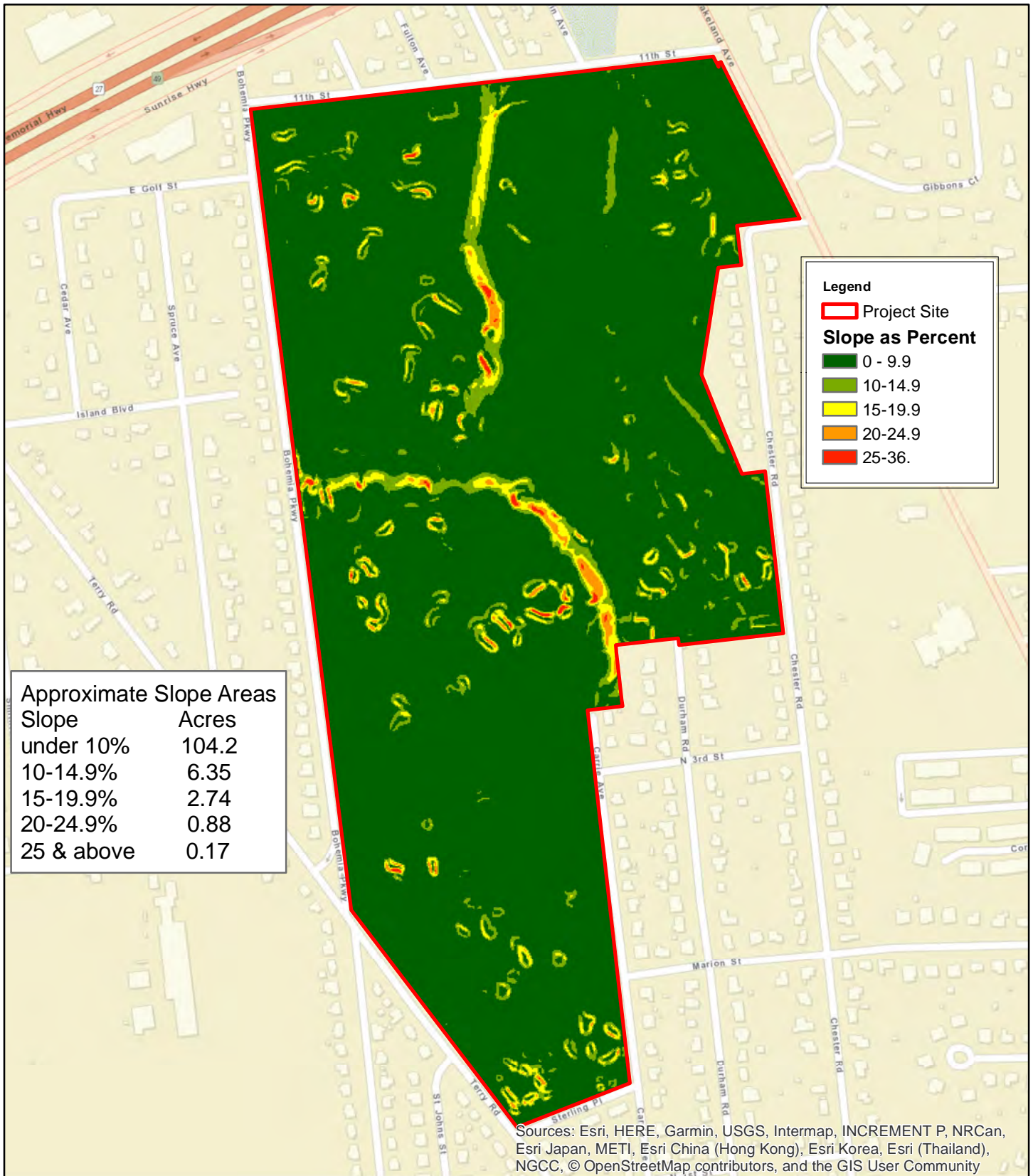
FIGURE 2-2 TOPOGRAPHIC MAP

Source: ESRI Web Mapping Service
Topo from FEMA Lidar, 2006 Scale: 1 inch = 500 feet



**Greybarn - Sayville
PDD-GS**

Draft EIS



**FIGURE 2-3
SLOPE MAP**

Source: ESRI Web Mapping Service,
Slope Calculated from FEMA Lidar, 2006
Scale: 1 inch = 500 feet



**Greybarn - Sayville
PDD-GS**

Draft EIS

Approximate location of project site

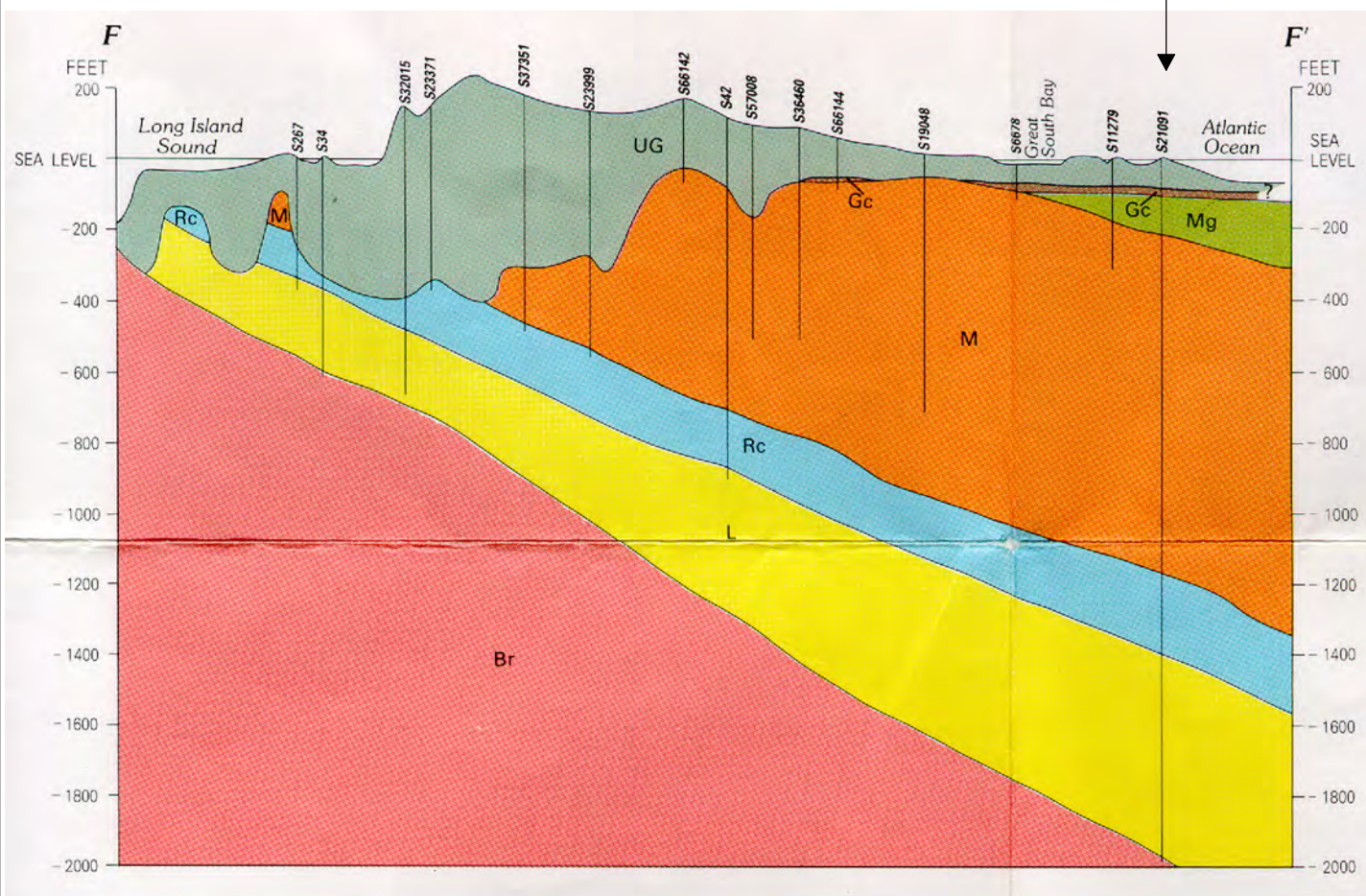


FIGURE 2-4
GEOLOGIC CROSS-SECTION

Source: Section F from Smolensky, et. al; USGS
Hydrologic Atlas:709, 1990
Scale: 1 inch = 2,000 feet



Greybarn -Sayville
PDD-GS

Draft EIS

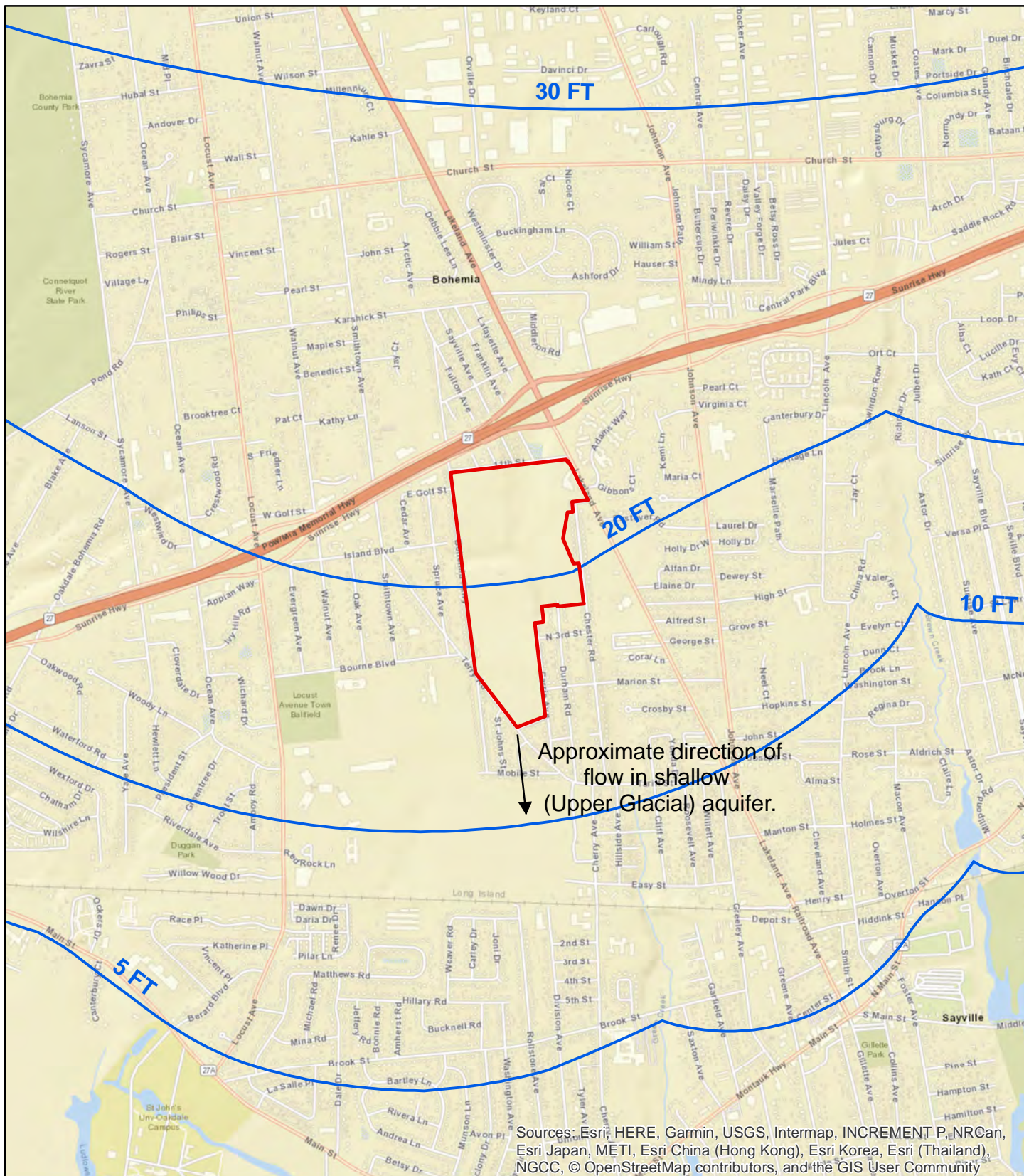


FIGURE 2-5
WATER TABLE
CONTOUR MAP

Greybarn - Sayville
PDD-GS

Draft EIS

Source: ESRI Web Mapping Service, USGS 2016
data, <https://pubs.er.usgs.gov/publication/sim3398>
Scale: 1 inch = 2,000 feet



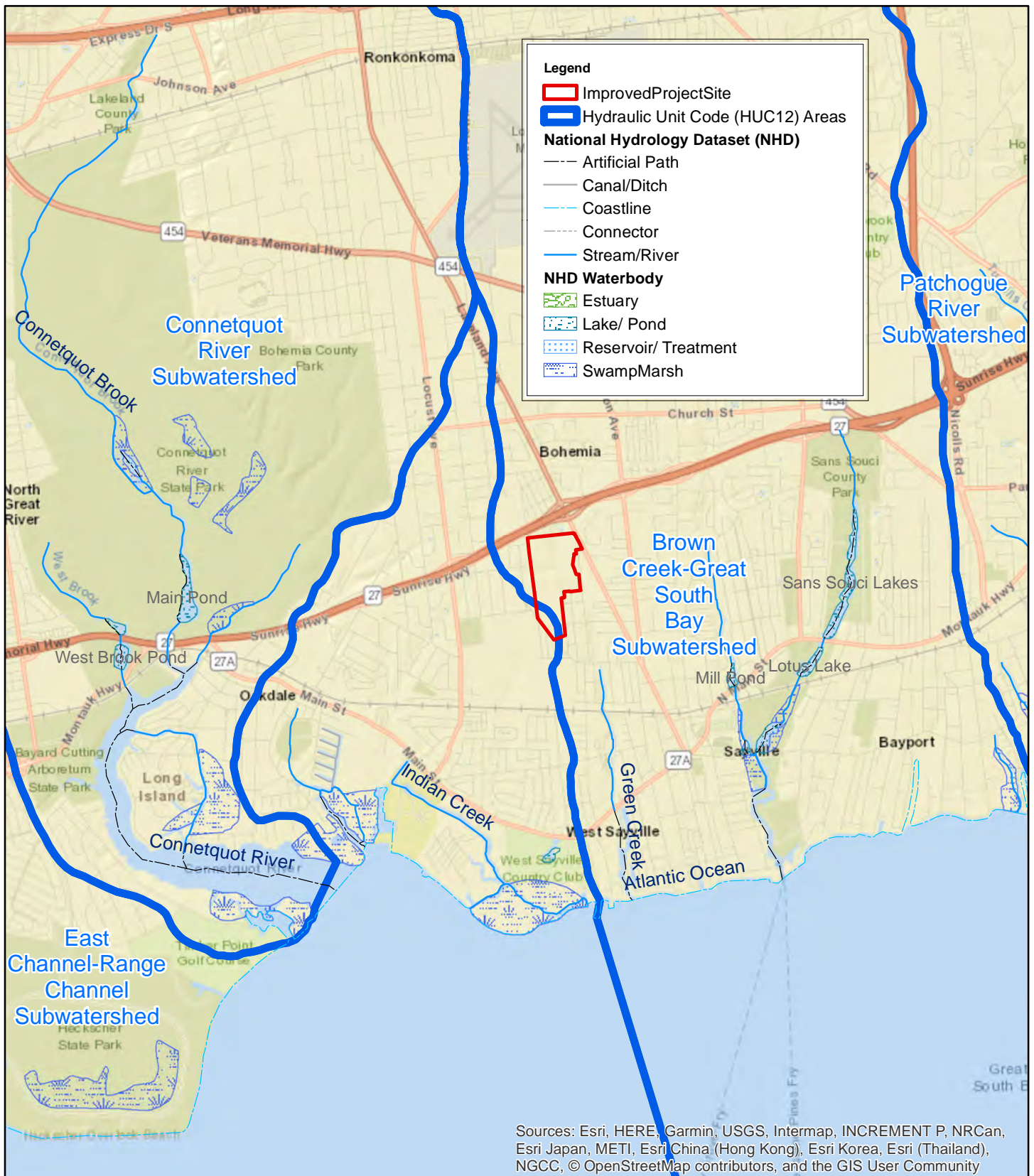


FIGURE 2-6
SURFACE WATER RESOURCES
MAP

Source: ESRI Web Mapping Service,
 USGS NHD Datasets
 Scale: 1 inch = 5,000 feet



Greybarn -
Sayville PDD-GS

Draft EIS



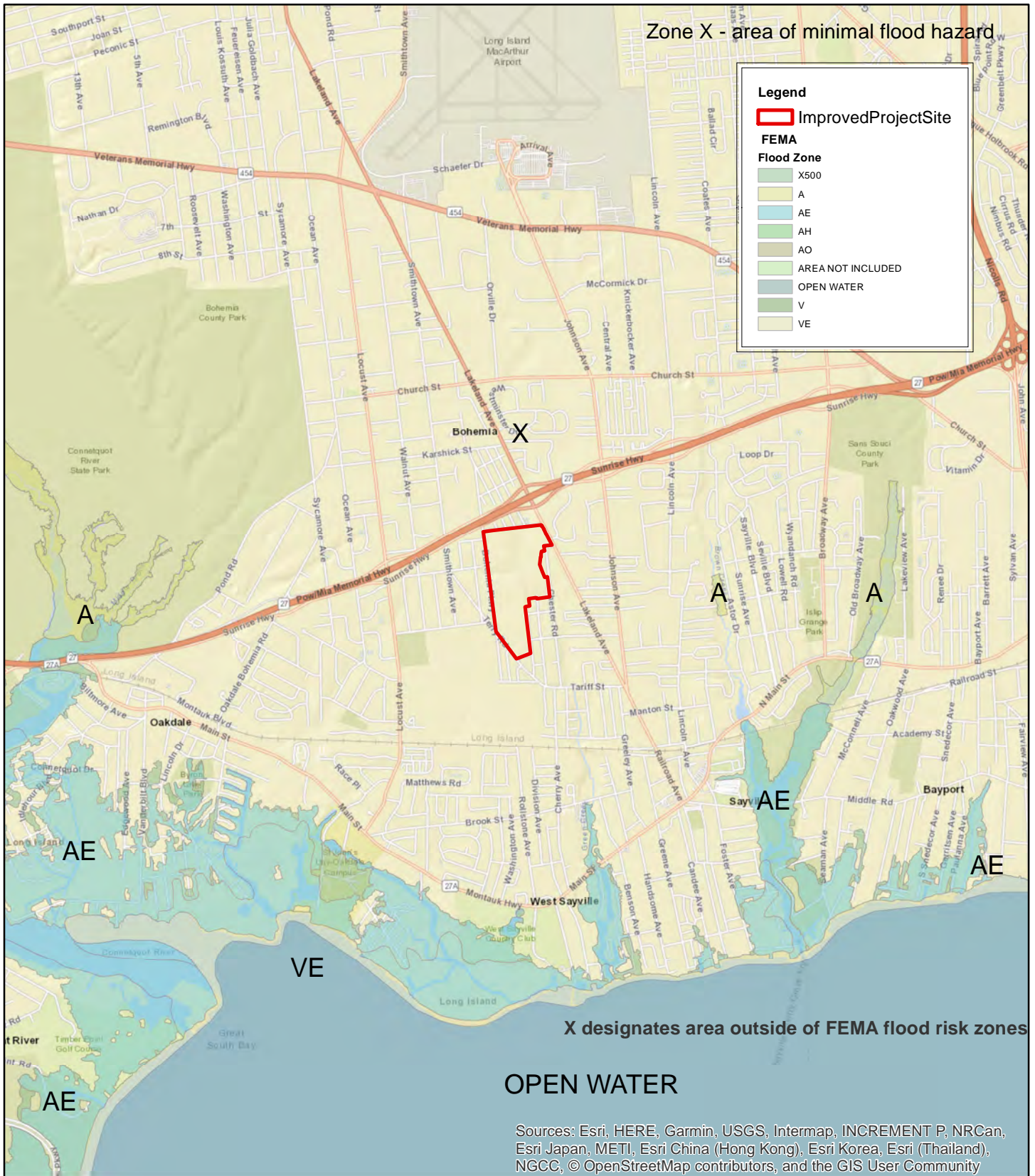


FIGURE 2-7
FEMA FLOOD HAZARD ZONE MAP

Source: ESRI Web Mapping Service, FEMA
Scale: 1 inch = 4,000 feet



Greybarn - Sayville
PDD-GS

Draft EIS





FIGURE 2-8
GREEN'S CREEK PLAN MAP

Greybarn - Sayville
PDD-GS

Draft EIS

Source: ESRI Web Mapping Service, USGS NHD,
Town of Islip Watershed Management Plan, 2007
Scale: 1 inch = 3,000 feet





**FIGURE 2-9
HABITAT MAP**

Source: NYS Orthoimagery Program, 2016.

Scale: 1 inch = 500 feet



**Greybarn -Sayville
PDD-GS**

Draft EIS



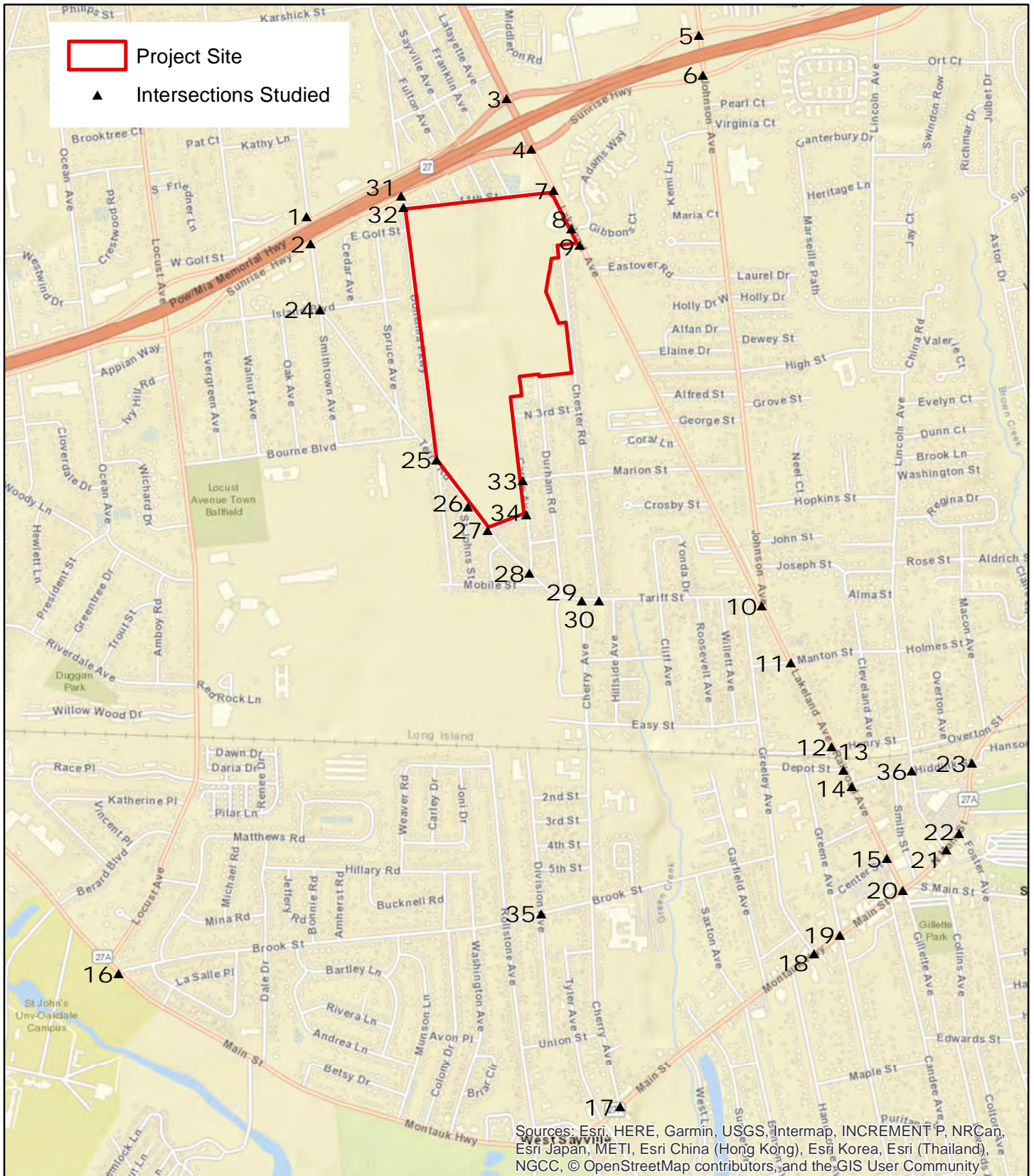
**FIGURE 2-10
 SAYVILLE NATIONAL WILDLIFE
 REFUGE MAP**

Source: NYS Orthophotography, 2016
 US Fish & Wildlife Service, Wertheim NWR office
 Scale: 1 inch = 1,000 feet



**Greybarn - Sayville
 PDD-GS**

Draft EIS



**FIGURE 3-1
INTERSECTIONS STUDIED**

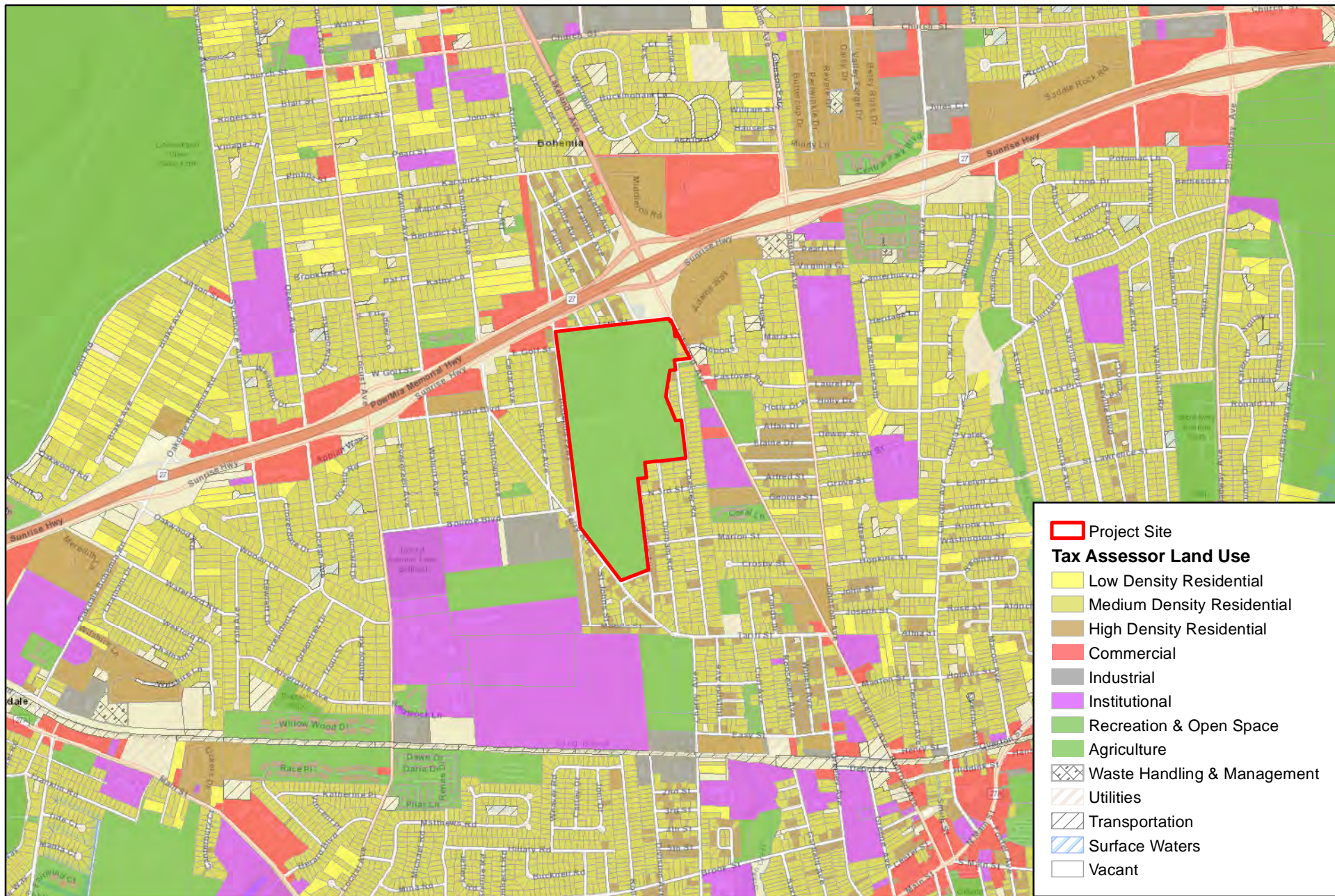
**Greybarn - Sayville
PDD-GS**

Draft EIS

Source: ESRI Web Mapping Service

Scale: 1 inch = 1,600 feet





**FIGURE 3-2
LAND USE MAP**

Source: ESRI WMS; Suffolk County Land Use, 2016
Scale: 1 inch = 2,000 feet



**Greybarn -Sayville
PDD-GS**

Draft EIS



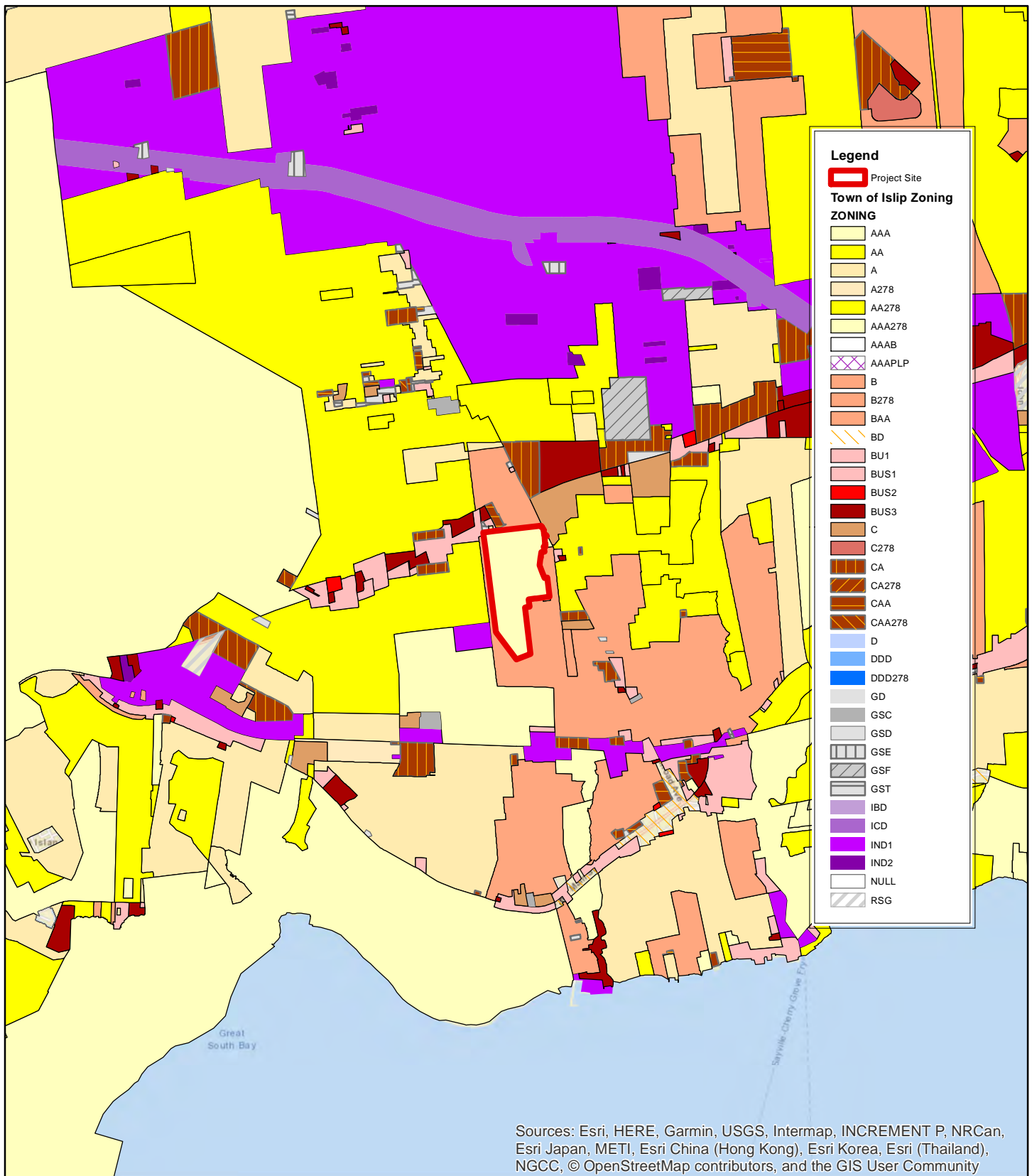


FIGURE 3-3
ZONING MAP

Greybarn - Sayville
PDD-GS

Draft EIS

Source: ESRI Web Mapping Service;
Town of Islip data
Scale: 1 inch = 4,000 feet



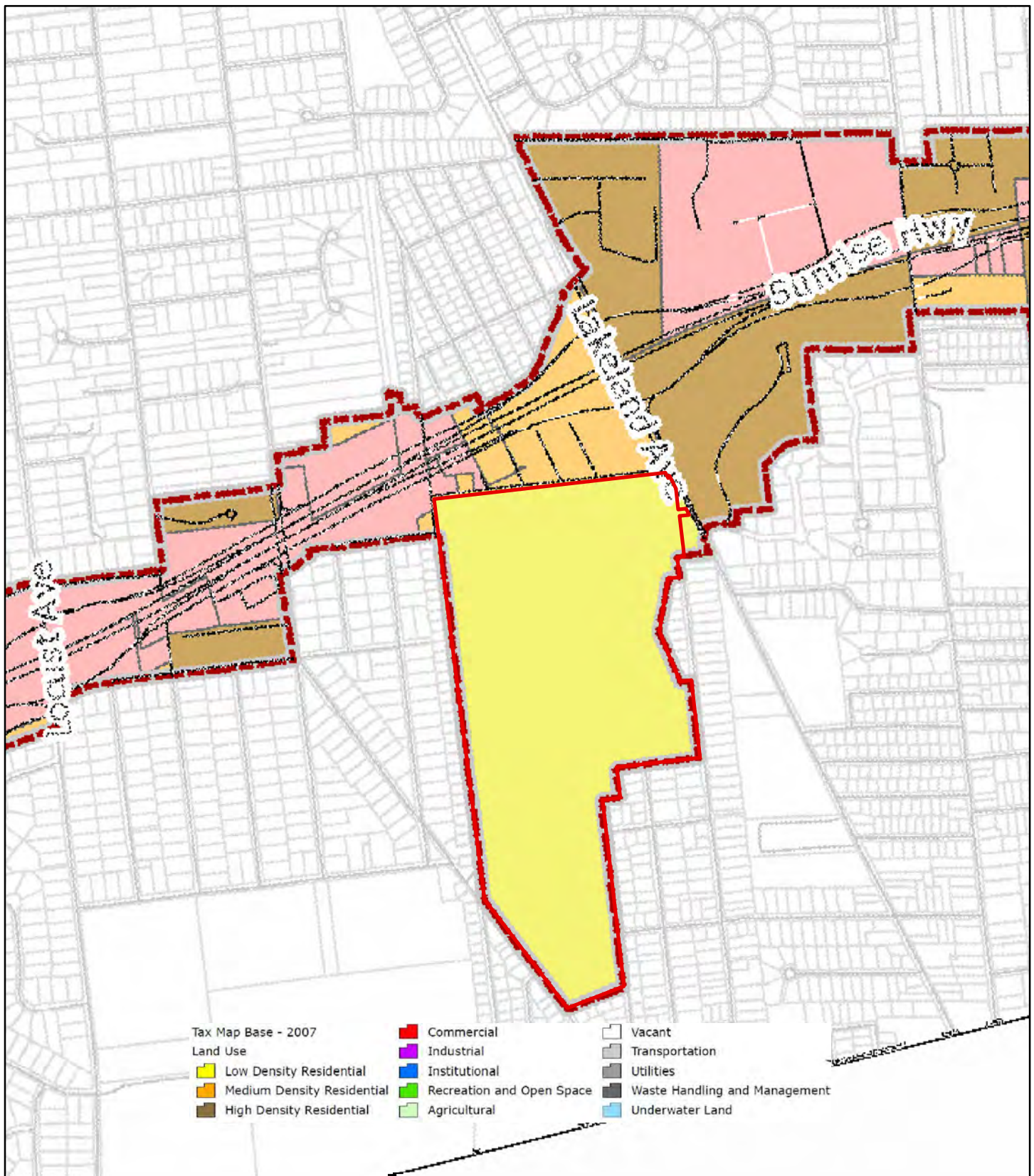


FIGURE 3-4
RECOMMENDED LAND USE,
SUNRISE HIGHWAY CORRIDOR STUDY

Source: ESRI Web Mapping Service;
 Suffolk County Planning (Map1, 2007)
 Scale: 1 inch = 1,000 feet



Greybarn - Sayville
PDD-GS

Draft EIS



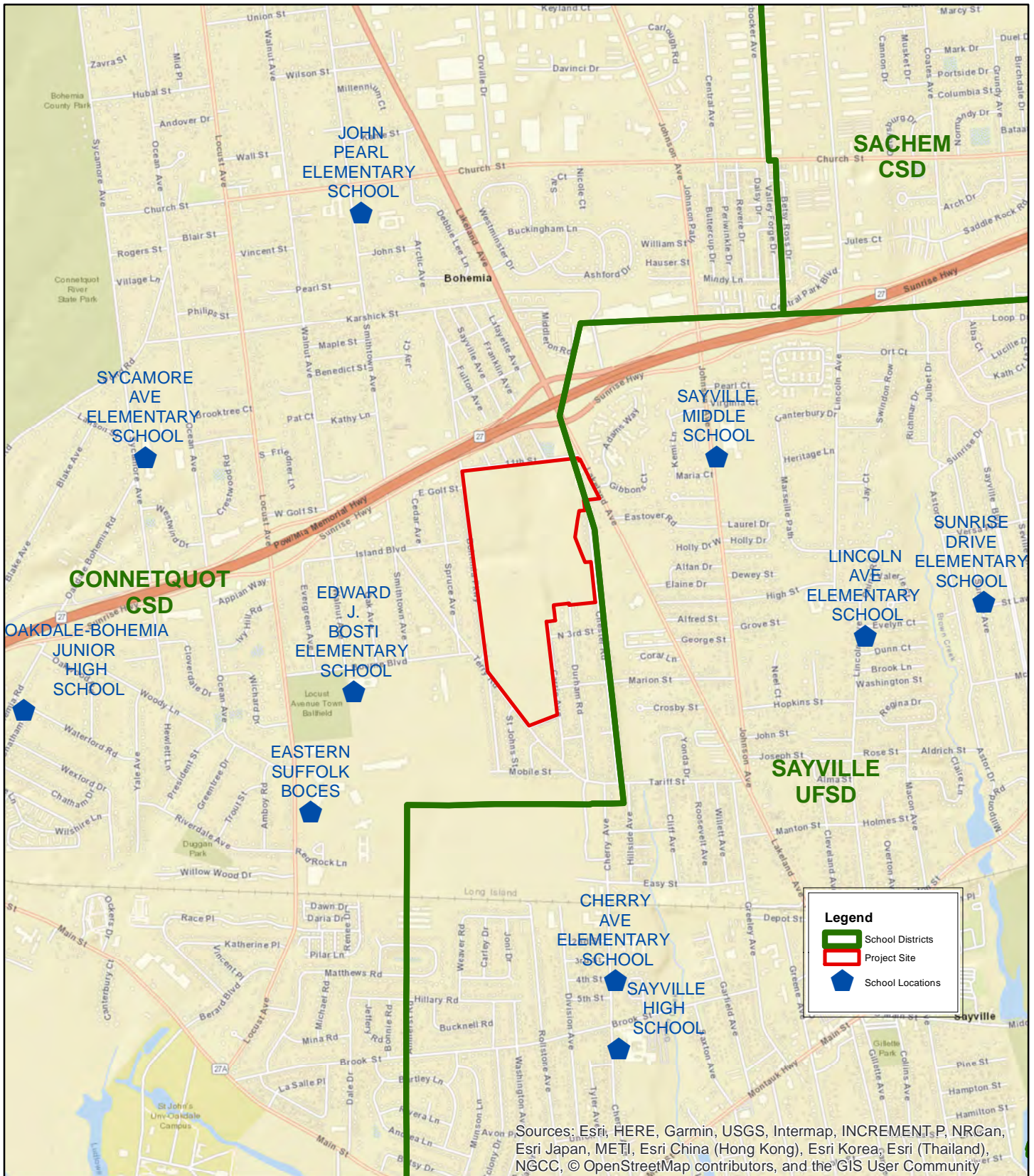


FIGURE 3-5a

**COMMUNITY SERVICES MAP, PUBLIC
EDUCATION**

Source: ESRI Web Mapping Service;
Suffolk County data
Scale: 1 inch = 2,000 feet



**Greybarn - Sayville
PDD-GS**

Draft EIS



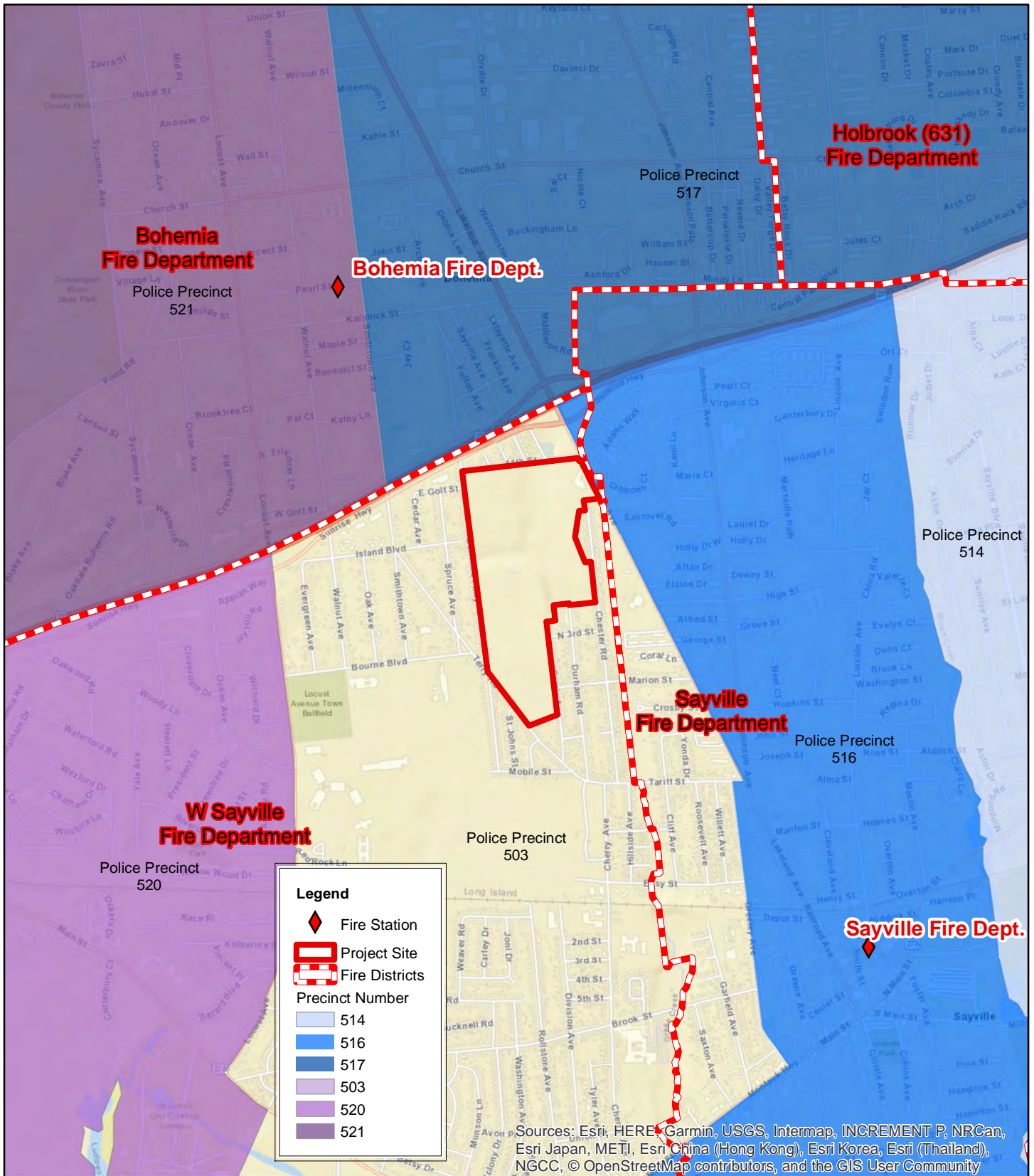


FIGURE 3-5b

**COMMUNITY SERVICES MAP, PUBLIC
SAFETY & SECURITY**

Source: ESRI Web Mapping Service;
Suffolk County data
Scale: 1 inch = 2,000 feet



**Greybarn - Sayville
PDD-GS**

Draft EIS



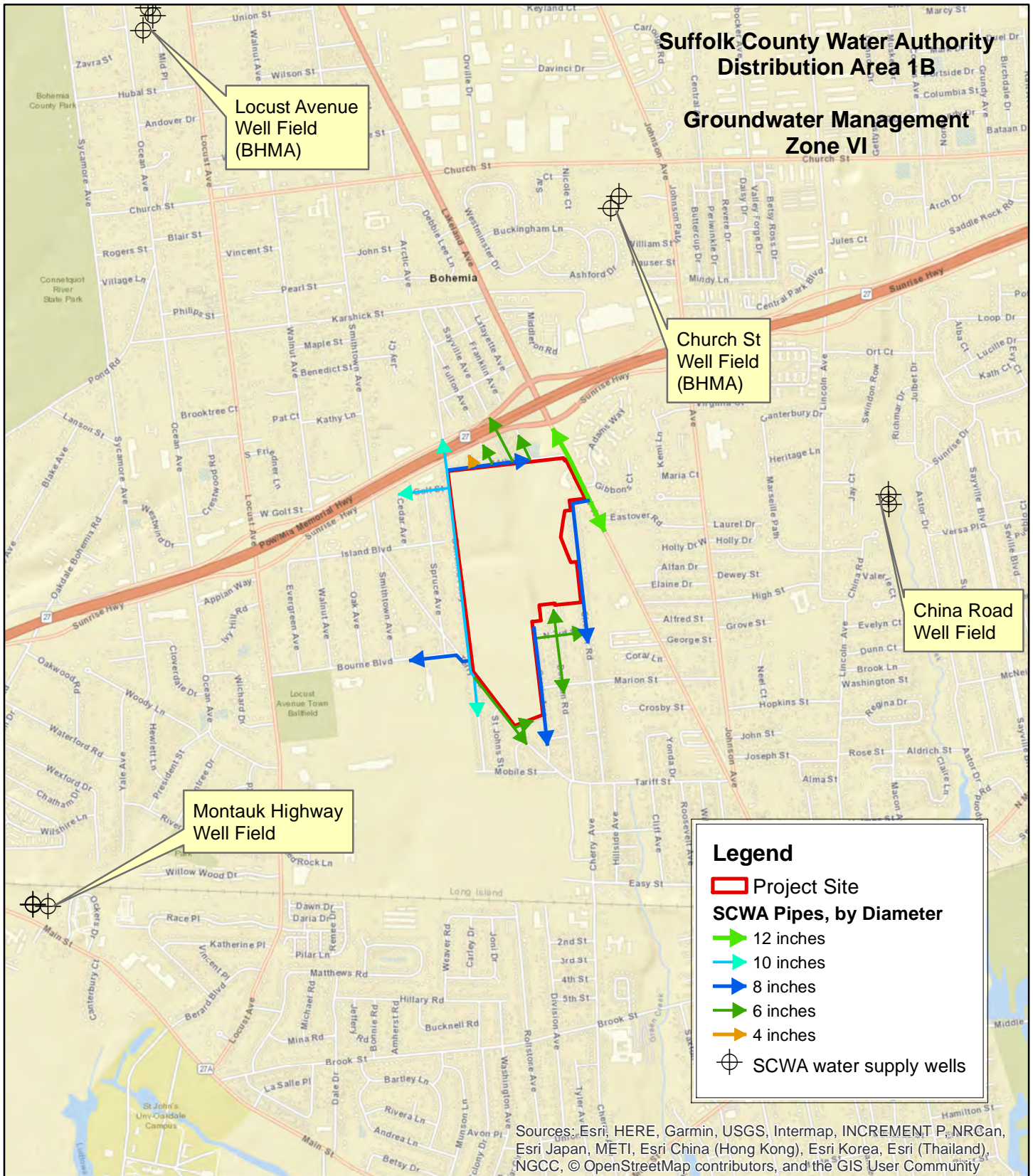


FIGURE 3-5c

**COMMUNITY SERVICES MAP, PUBLIC
WATER SUPPLY**

Source: ESRI Web Mapping Service,
Suffolk County Water Authority
Scale: 1 inch = 2,000 feet



**Greybarn - Sayville
PDD-GS**

Draft EIS





FIGURE 3-5d
SCWA WATER SUPPLY SYSTEM
DOWNGRADIENT OF SITE

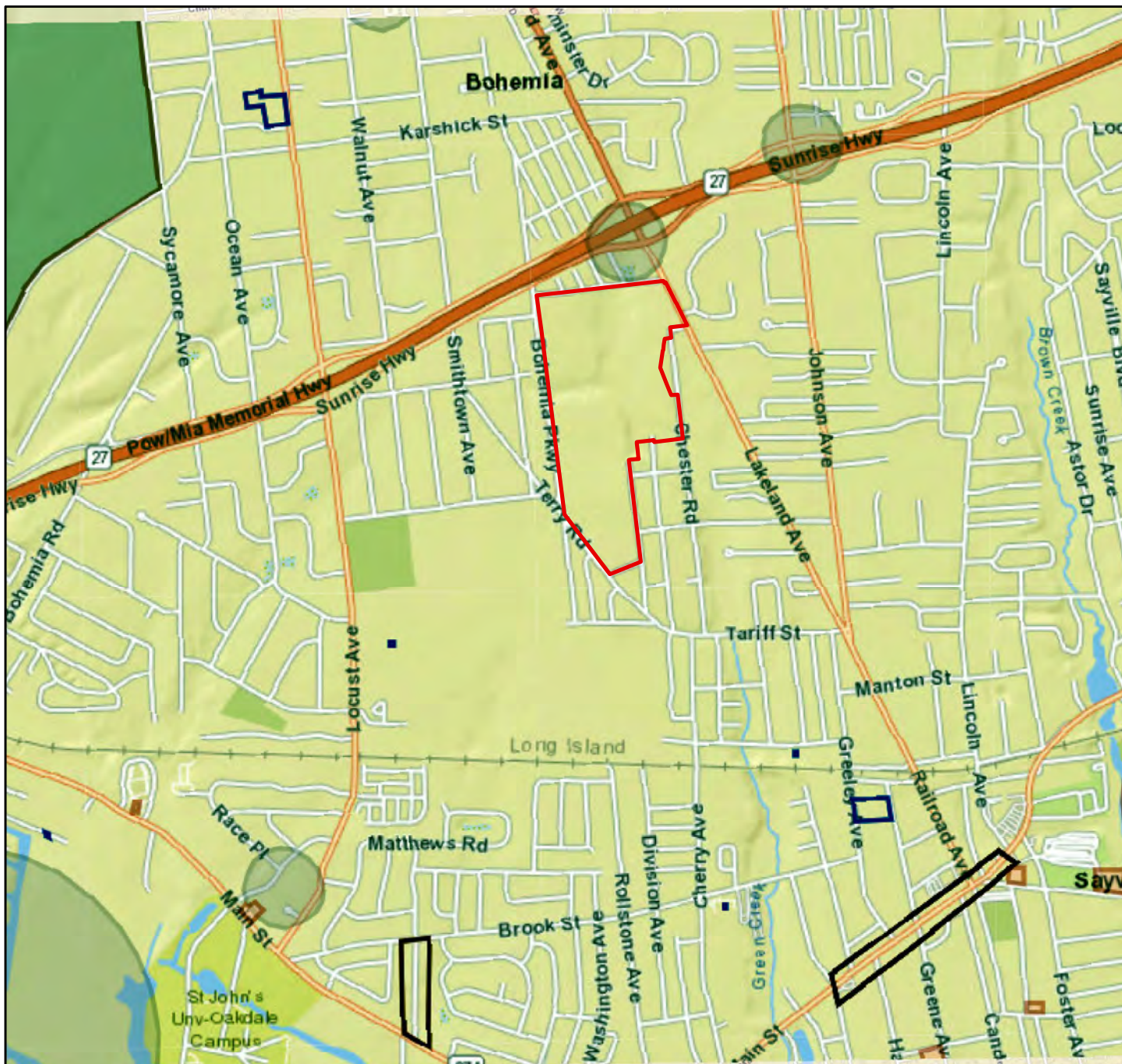
Source: ESRI Web Mapping Service,
 Suffolk County Water Authority Scale: 1
 inch = 2,000 feet



Greybarn - Sayville
 PDD-GS

Draft EIS





Survey Archaeology
Areas (View)



Consultation Projects
(View)



USN Building Districts
(View)



Survey Building Areas
(View)



**Archeologically
Sensitive Areas**



NPV

FIGURE 3-7 CULTURAL RESOURCES SENSITIVITY MAP

Source: ESRI Web Mapping Service, NY SHPO,
<https://cris.parks.ny.gov>
Scale: 1 inch = 2,000 feet



Greybarn - Sayville
PDD-GS

Draft EIS

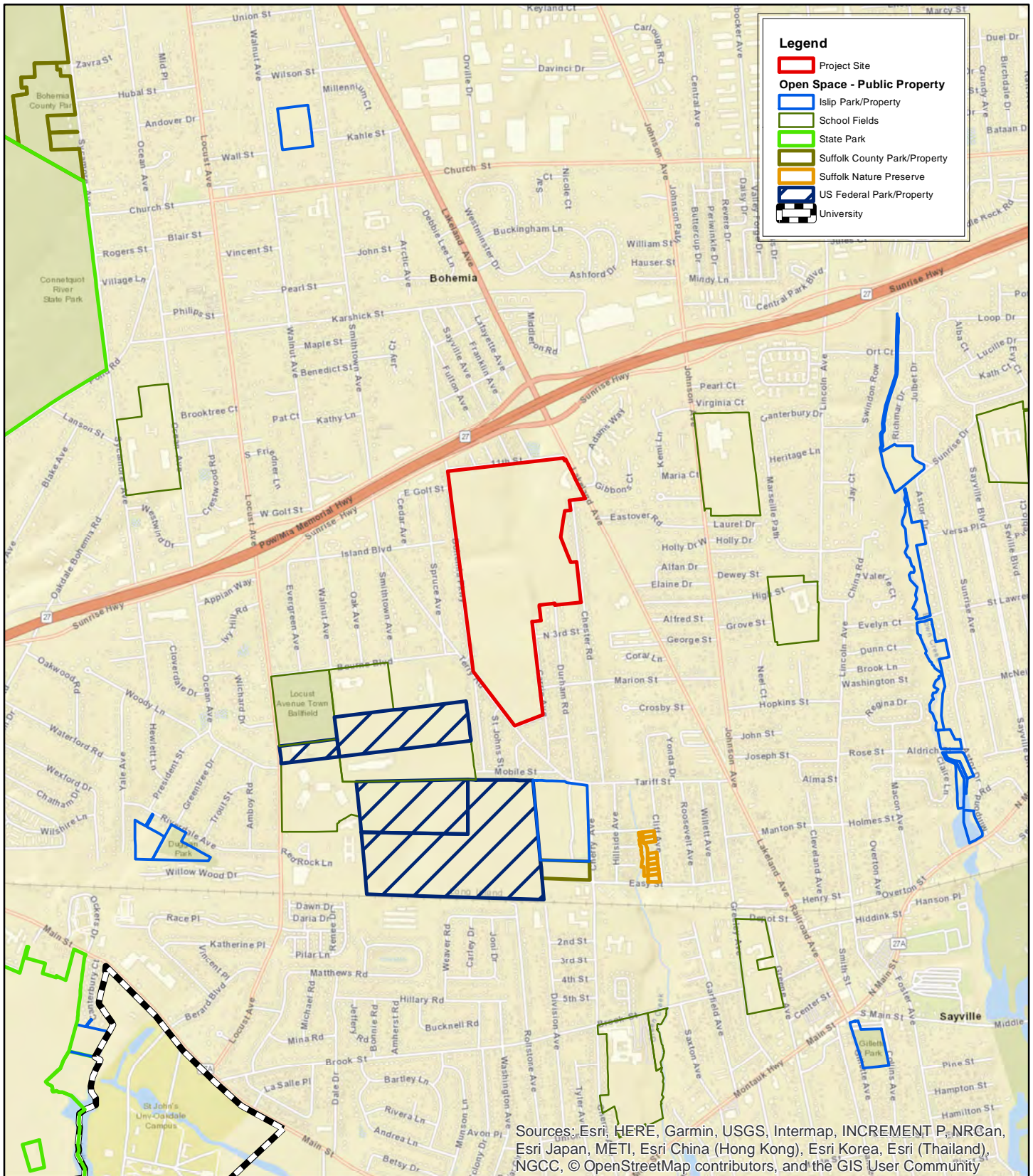


FIGURE 3-8
OPEN SPACE & RECREATIONAL SITES
MAP

Source: ESRI Web Mapping Service;
 Suffolk County data
 Scale: 1 inch = 2,000 feet



Greybarn - Sayville
PDD-GS

Draft EIS



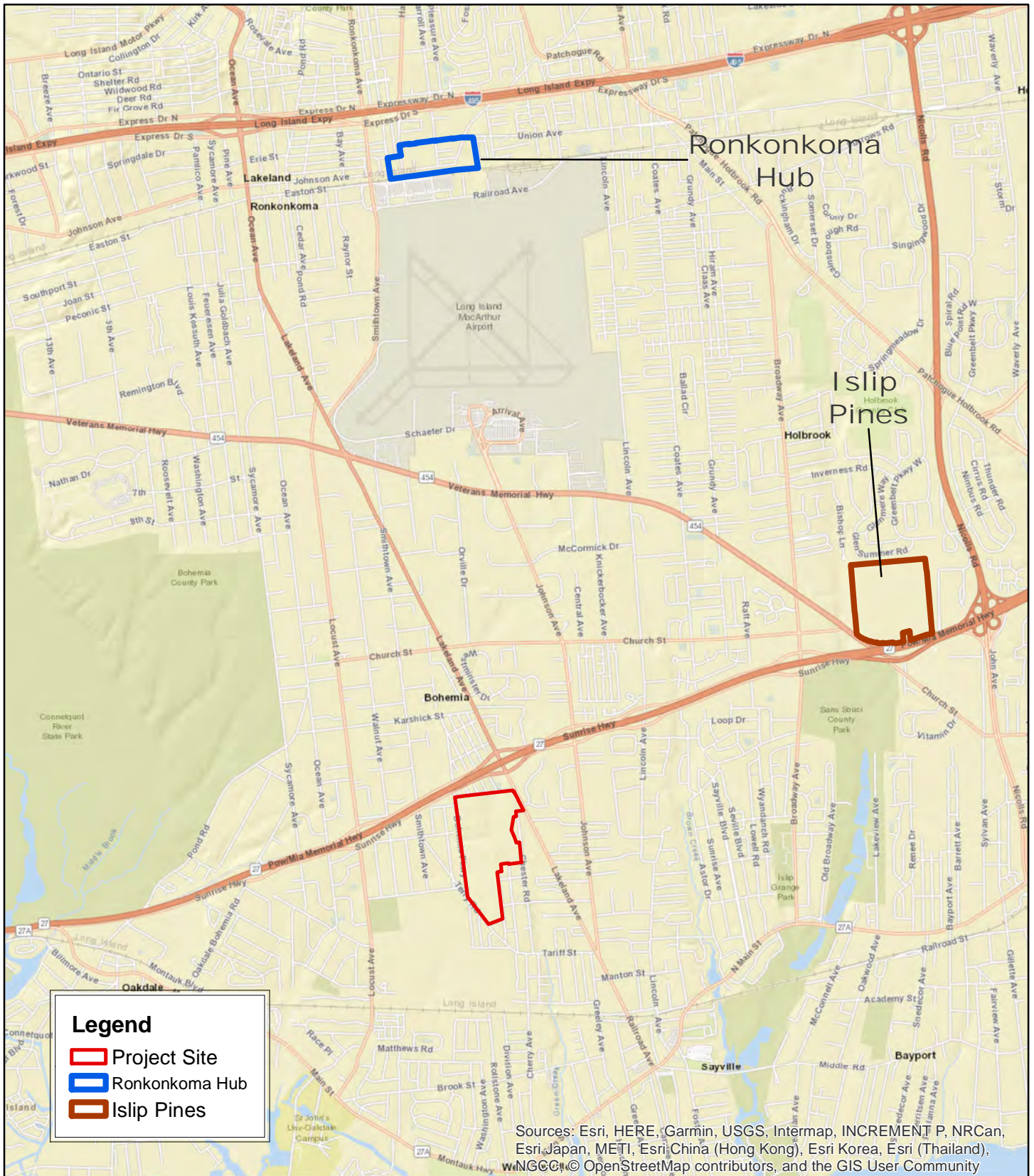


FIGURE 4-1
LOCATION MAP, OTHER
PENDING PROJECTS

Source: ESRI Web Mapping Service
 Suffolk County data
 Scale: 1 inch = 4,037.163814 feet



Greybarn - Sayville
PDD-GS

Draft EIS

